

# Urban Forest Park Vision and Pedestrian Access Corridors

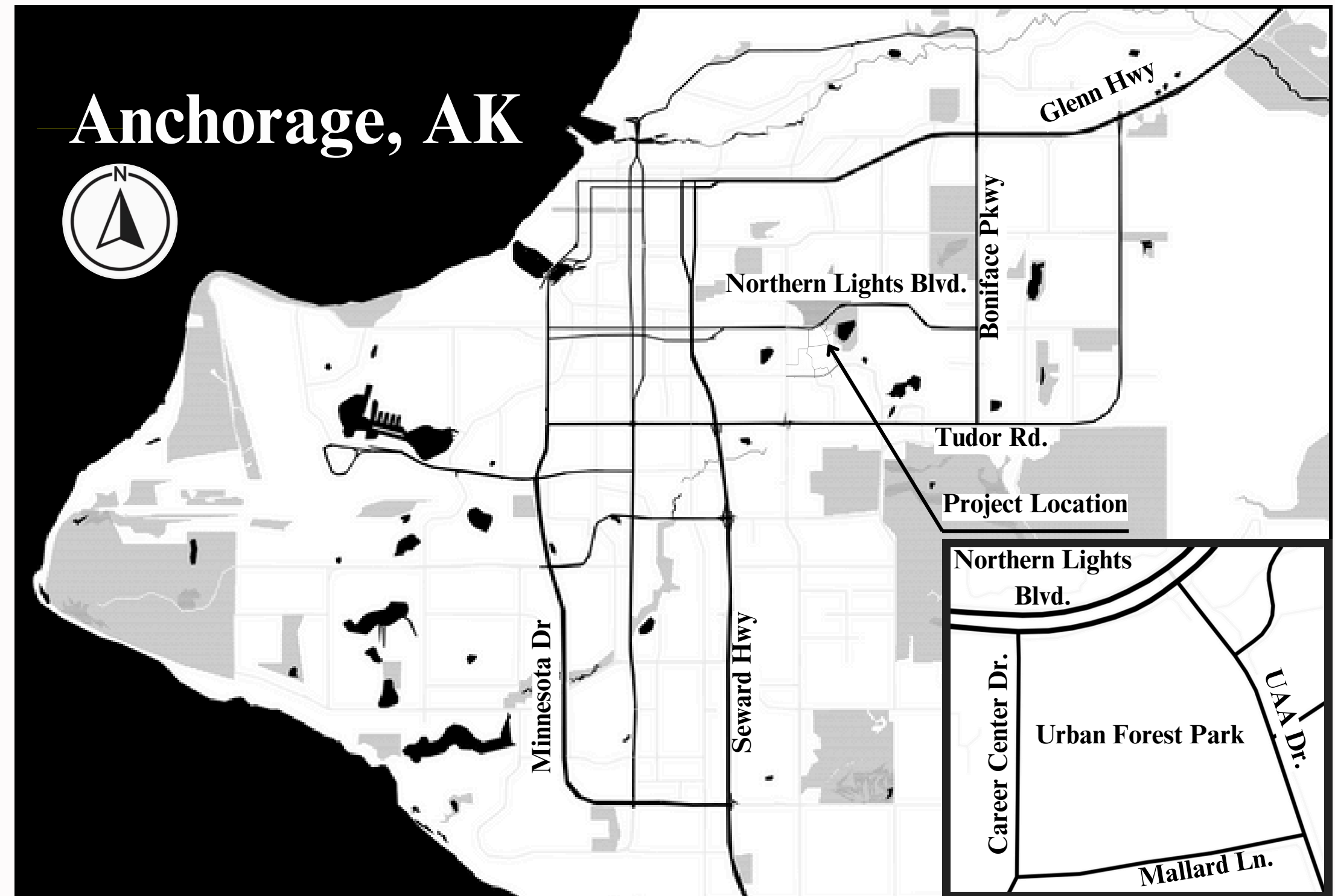


Denali Consulting L.L.C.

Project No. CED 2024.03

DATE: 4/26/2024

Presented by:  
Eric Jenkins and  
Daniel Tedrick



Client:  
Facilities and Campus Services  
University of Alaska Anchorage



# Overview

- 1** Introduction
- 2** Background & Existing Conditions
- 3** Methodology
- 4** Alternative Designs
- 5** Typical Sections
- 6** Project Schedule

# Introduction

## Urban Forest Park

- 20 Acres of underutilized land
- Transportation and recreational opportunity
- Currently an obstacle

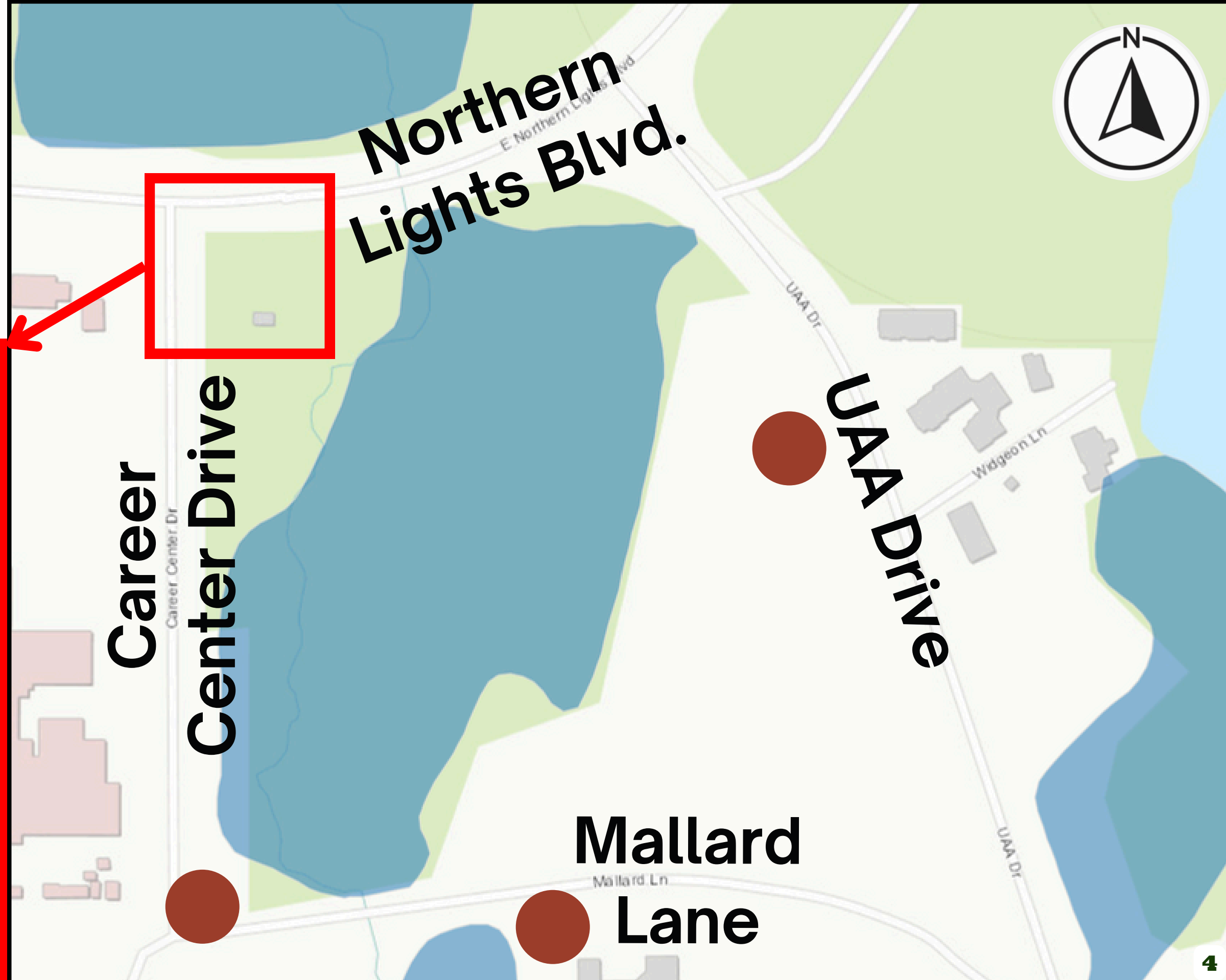
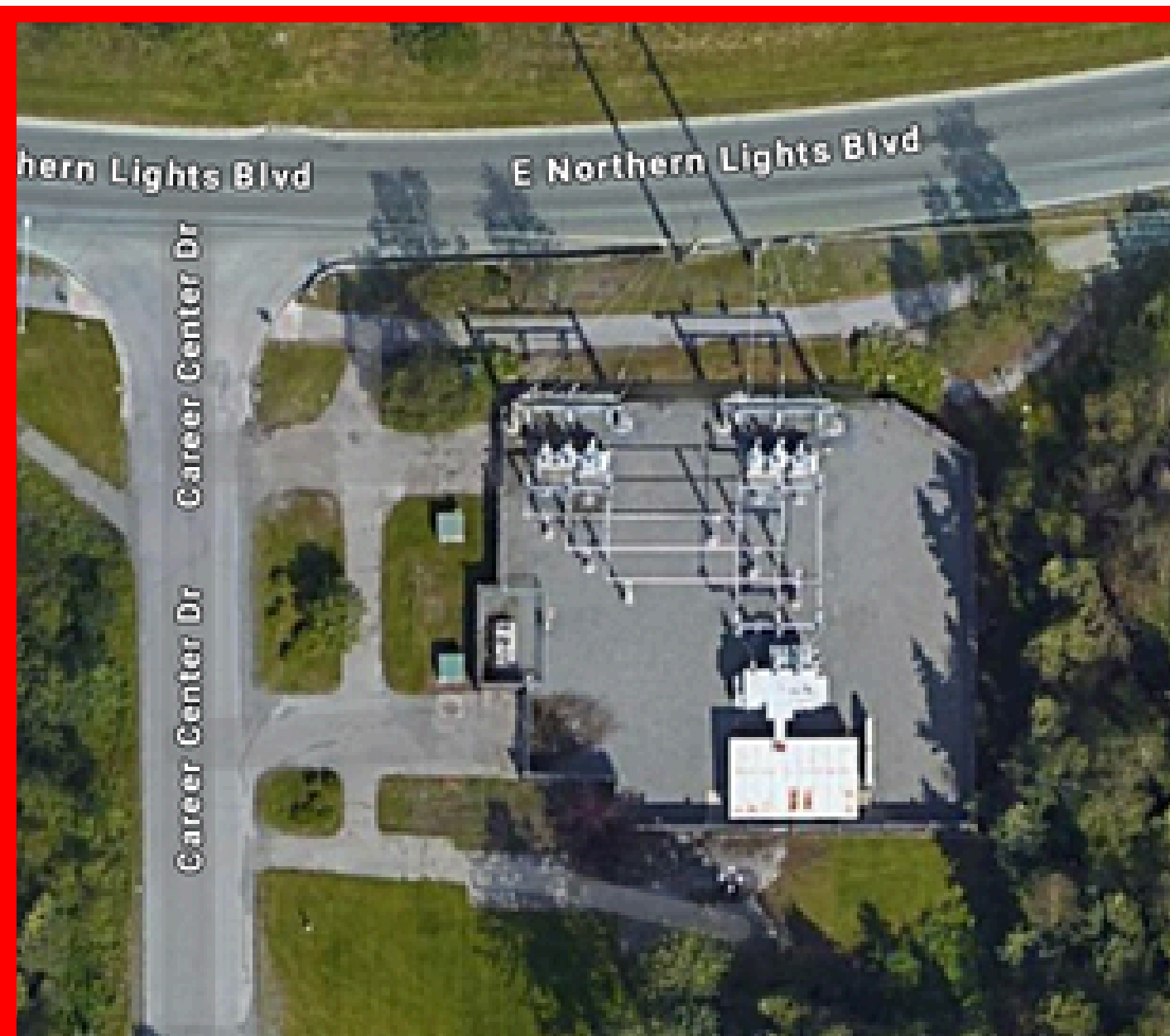
## Purpose of Project

- Accessibility & Connectivity in UAA/UMED Area
- Safety
- Trail Rehabilitation



# Background & Existing Conditions

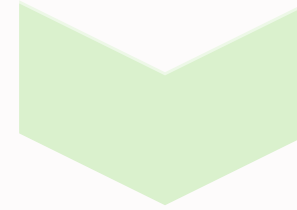
- UAA & MOA Parcels
- Snow Maintenance
- Type A Wetland
- Chugach Electric Substation



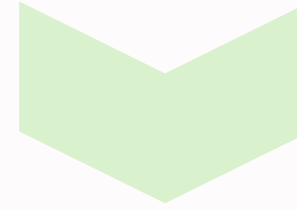


# Methodology

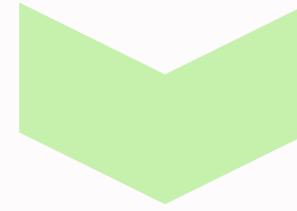
**Outreach/ Data Collection**



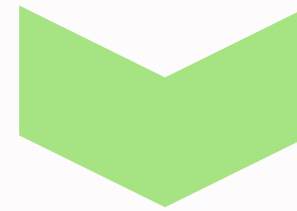
**Design Criteria**



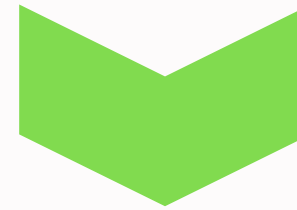
**Concept Development**



**Develop Alternatives**



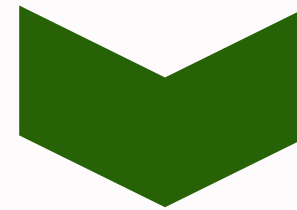
**Alternative Analysis**



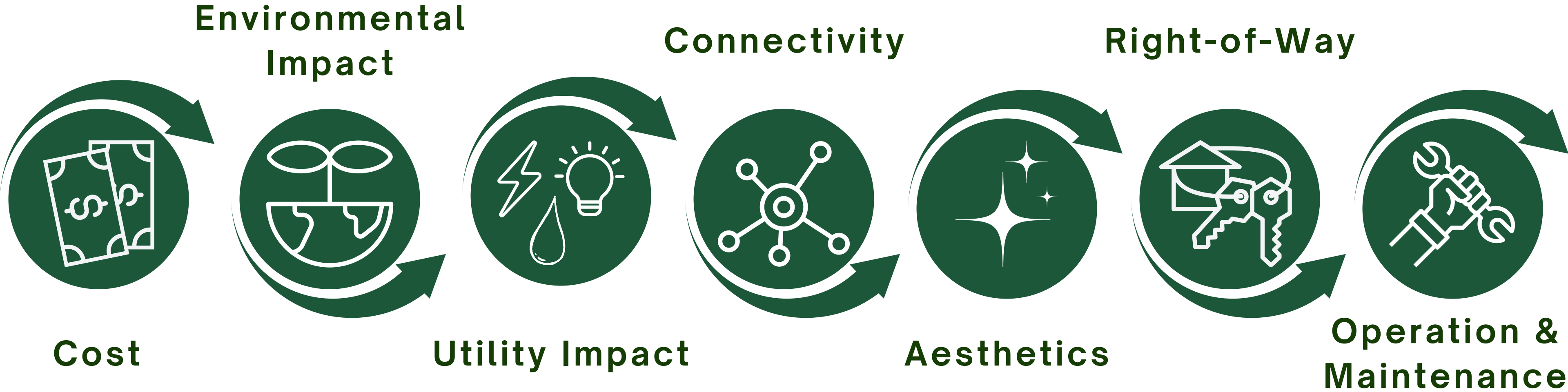
**Alternative Cost Estimates**



**Alternative Study Report**



# Analysis Criteria



# 1. No Build Alternative



## Pros (+)

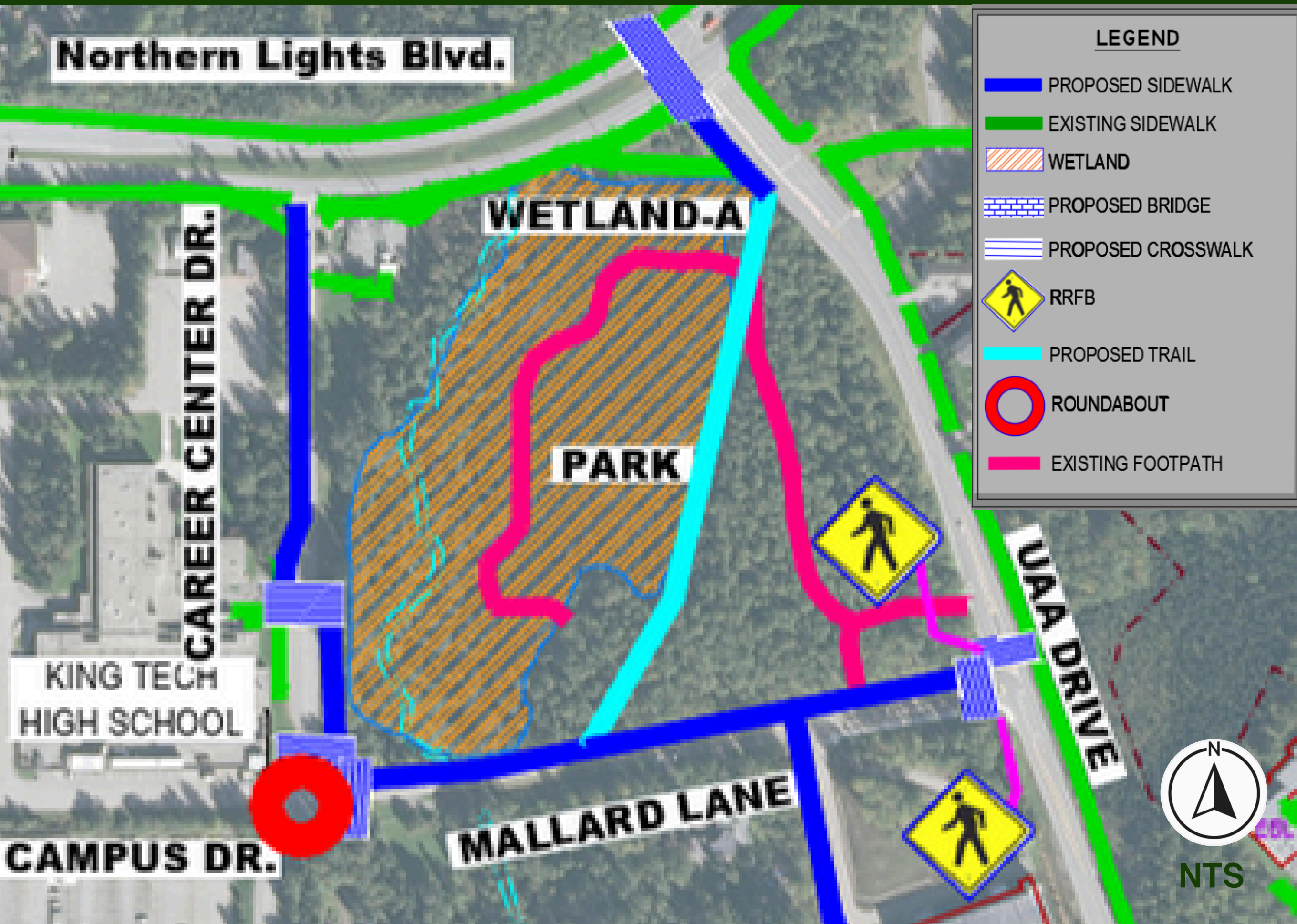
- No wetland Impact
- No utility relocation
- No property acquisition cost

## Cons (-)

- No improvement to connectivity
- KCC student safety concerns
- UAA Drive crossing concerns

**Estimated New Costs:**  
**\$0**

# 2. Roundabout Alternative



## Pros (+)

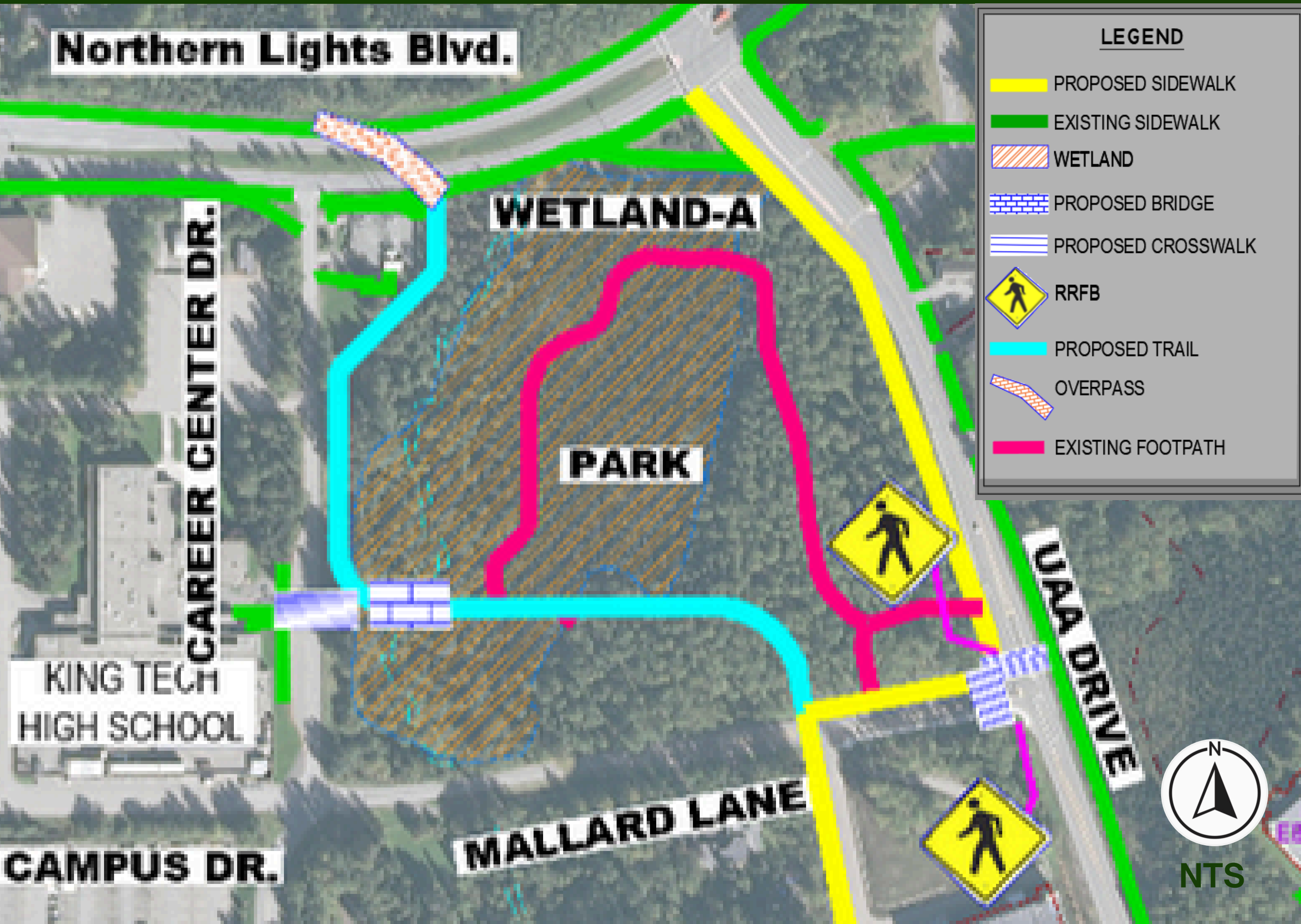
- Safety
- Minimal impact on the Wetland area
- No Utility relocation

## Cons (-)

- Doesn't unlock areas full potential
- Lacks Connectivity of Northern Lights Blvd and Career Center Dr.

**Estimated New Costs:**  
\$2,878,000 -  
\$4,230,000

# 3. Northern Lights Bridge Alternative



## Pros (+)

- Connectivity and Accessibility
- Safety of non-motorized users

## Cons (-)

- Major Utility Relocation costs
- Wetland Impact Cost

**Estimated New Costs:**  
\$88,892,000 -  
\$126,530,000



# 4. Multi-Way Alternative



## Pros (+)

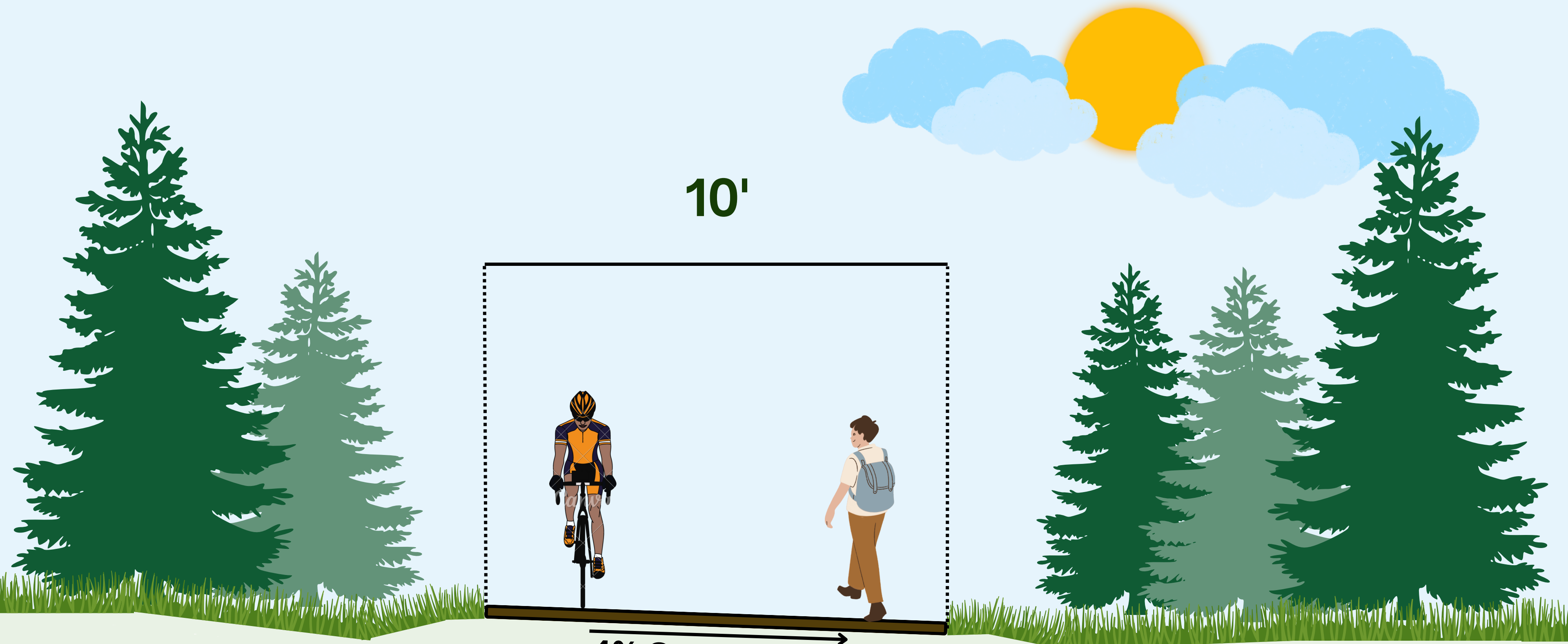
- The best design for connectivity
- Improvements to UFP and surrounding areas

## Cons (-)

- Wetland impact
- Utility relocation costs along UAA Drive

**Estimated New Costs:  
\$441,000 - \$605,000**

# Developed Trail - Urban Forest Park



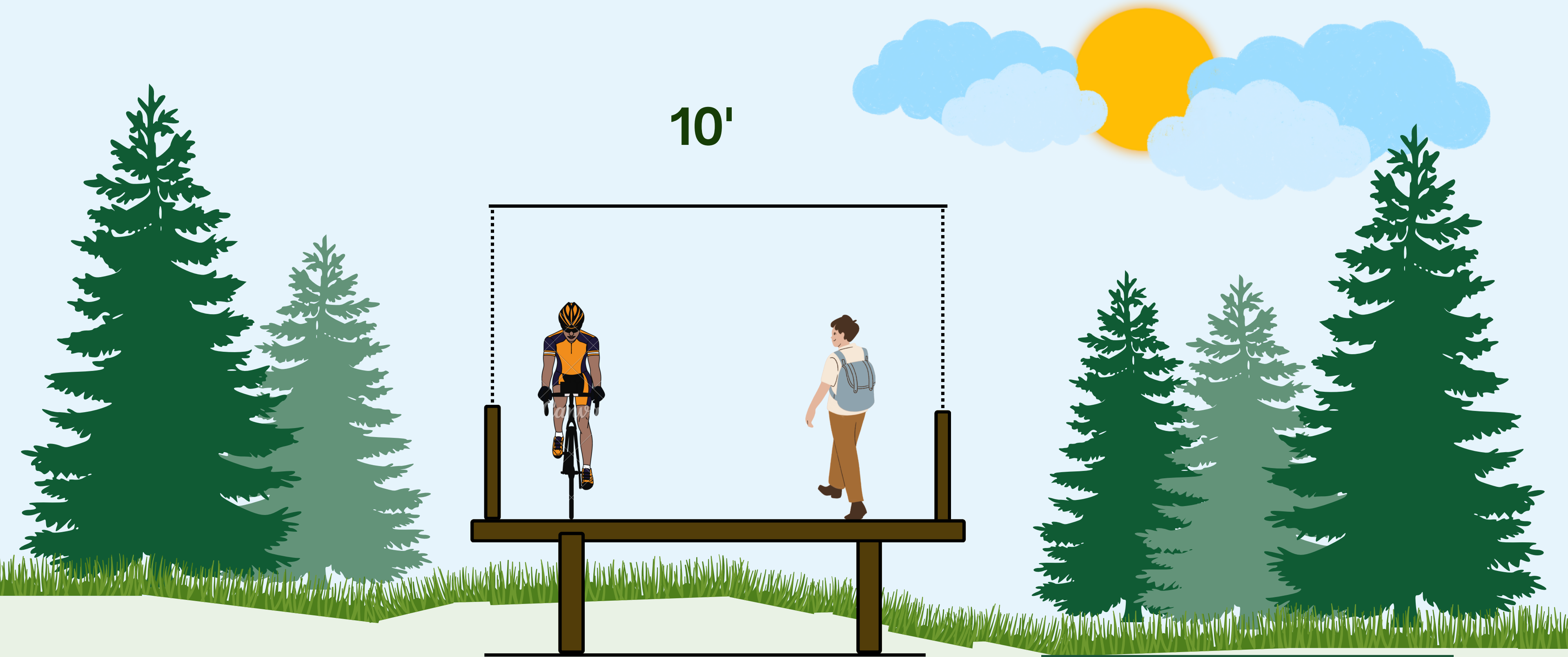
10'

4% Cross Slope

Typical Section

- \$50 / Linear Foot
- 20 MPH Speed Limit

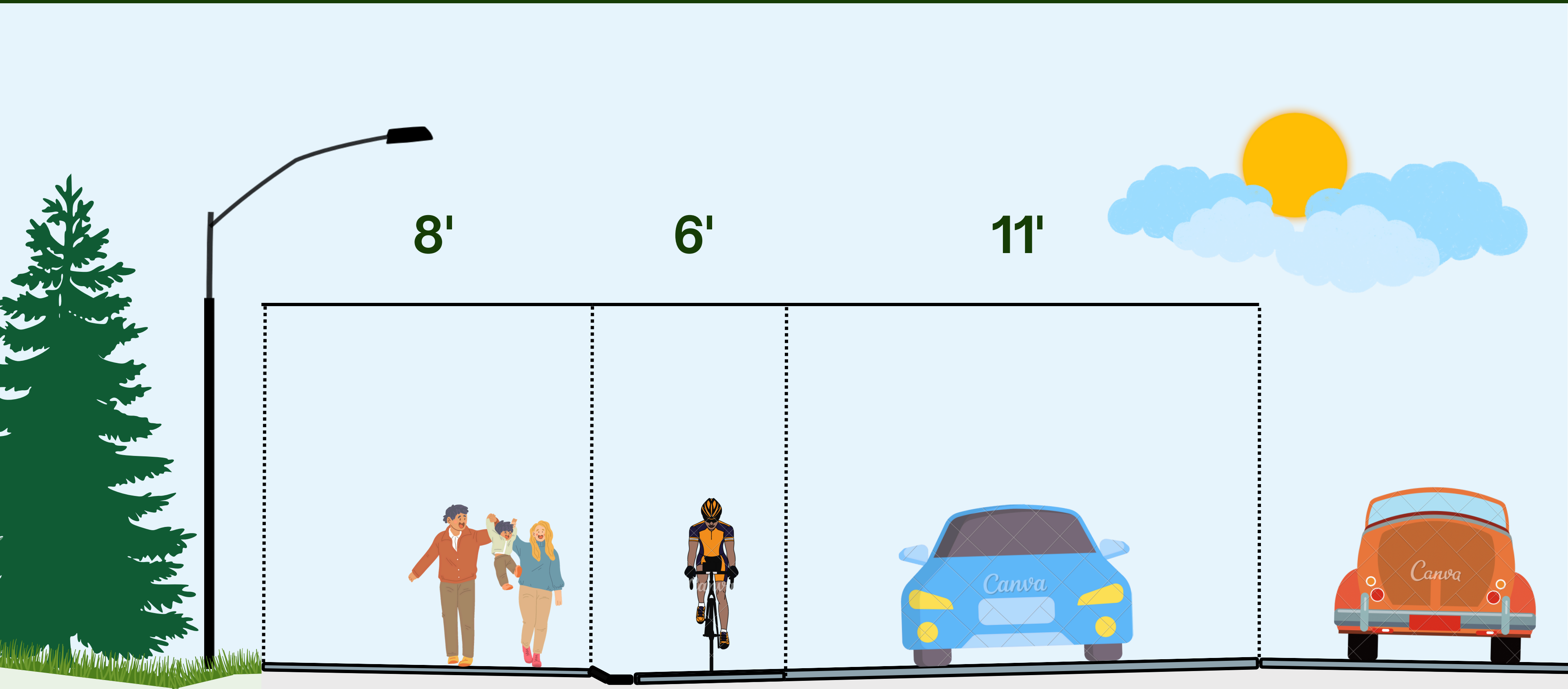
# Boardwalk Trail - Urban Forest Park



10'

- \$400 / Linear Foot
- 20 MPH Speed Limit

# Separate Bike Lane with Sidewalk

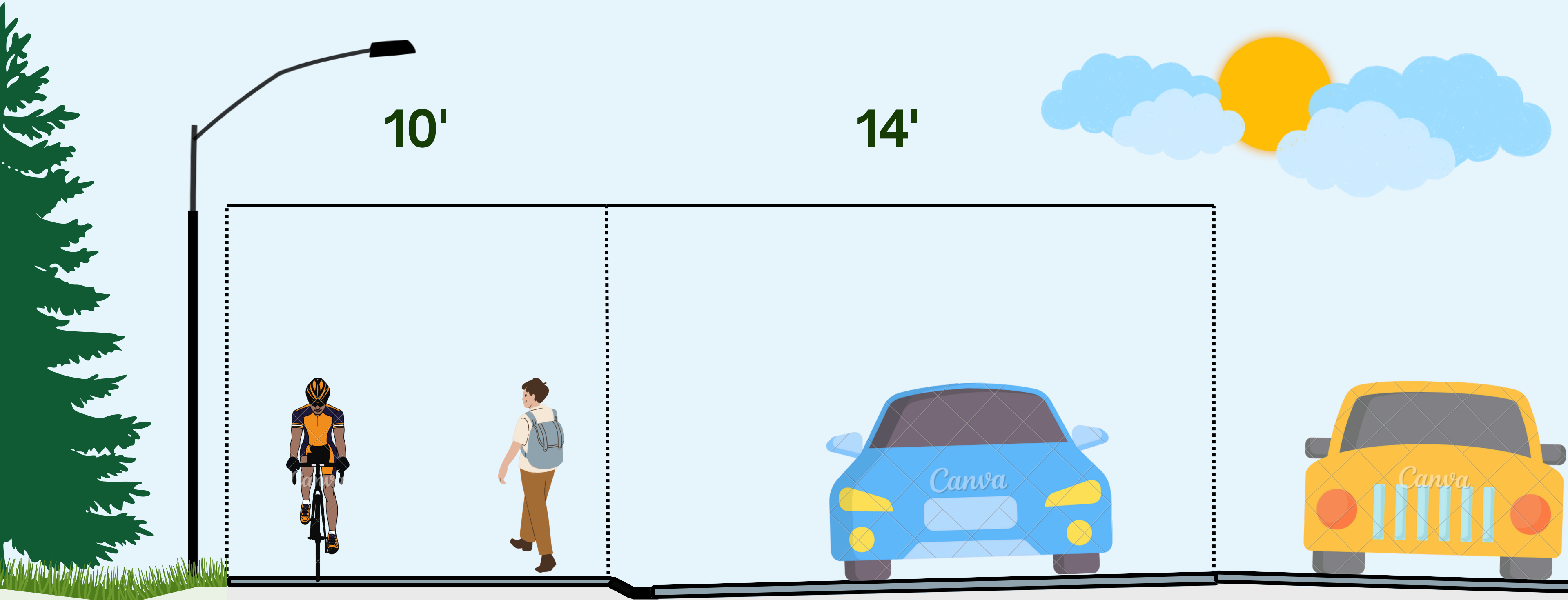


Career Center Drive, UAA Drive, Mallard Lane

Typical Section



# Shared Used Sidewalk



Career Center Drive, UAA Drive, Mallard Lane

Typical Section



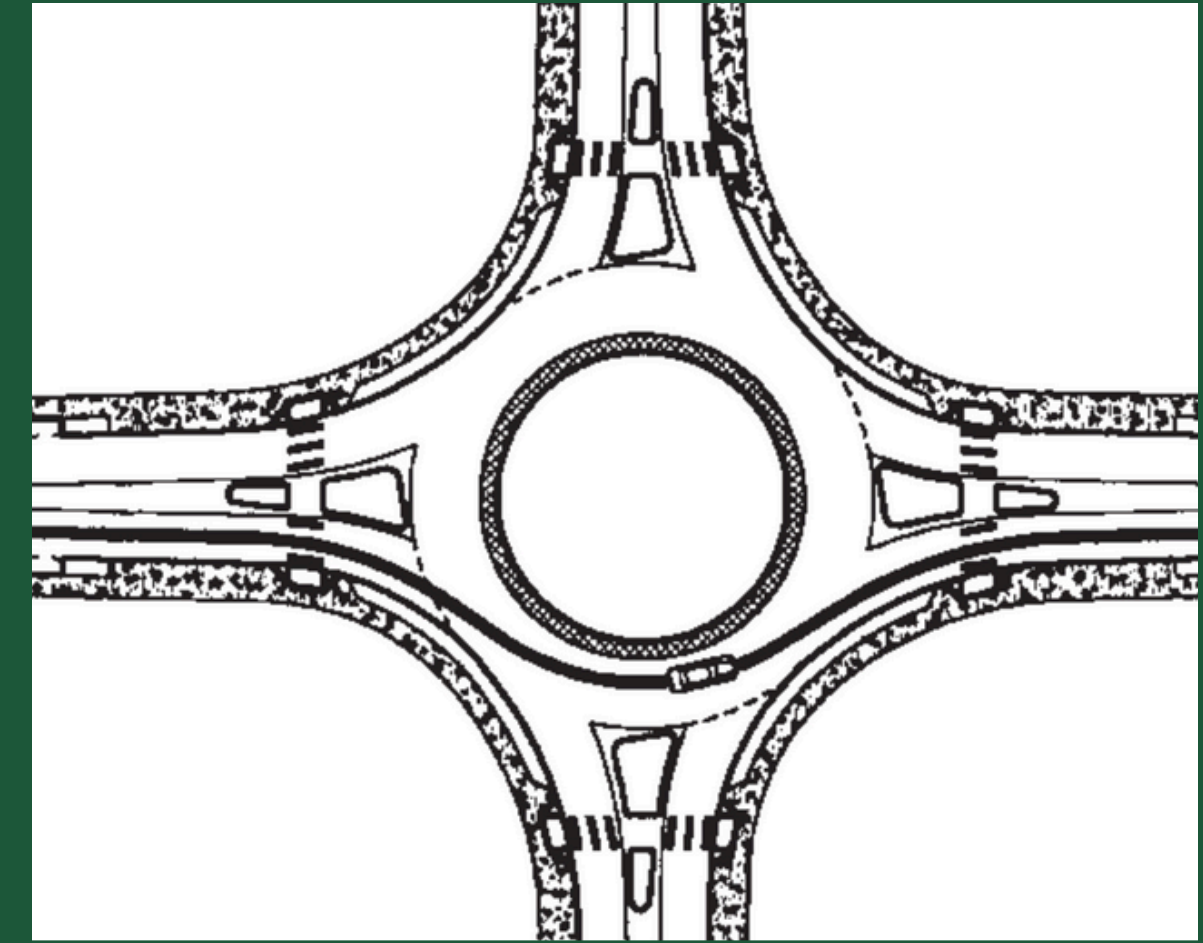
# Intersection Crossing



**Rectangular Rapid Flashing Beacon,**  
*Courtesy of FHWA*



**Alaska Native Medical Center Bridge,**  
*Courtesy of Google Maps*



**Single Lane Roundabout,**  
*Courtesy of FHWA*

# Decision Matrix

Alternatives	Cost	Environmental Impact	Utility Impact	Connectivity	Aesthetics	ROW	O&M
1. No Build	1	1	1	3	3	1	1
2. Roundabout	3	1	1	2	1	1	1
3. N. Lights Bridge	3	3	3	1	1	3	3
4. Multi-way	2	2	2	1	1	1	2

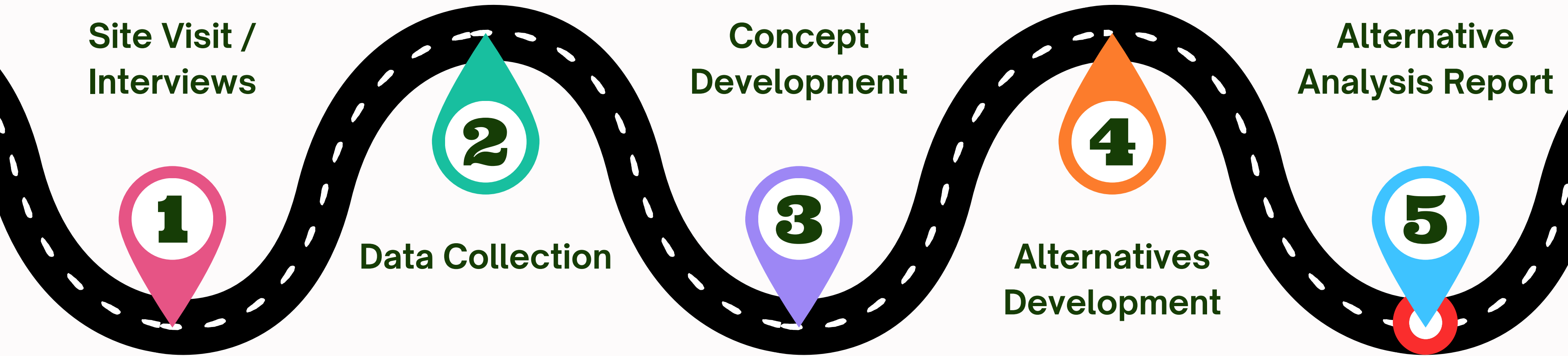
## Impact Level

-  = Low
-  = Medium
-  = High

Alternatives	Average (Lower is Better)
1. No Build	1.57
2. Roundabout	1.43
3. N. Lights Bridge	2.43
4. Multi-way	1.57



# Project Schedule



Site Visit /  
Interviews

1

Data Collection

2

Concept  
Development

3

Alternatives  
Development

4

Alternative  
Analysis Report

5

1/16 - 1/26/24

1/26 - 2/23/24

2/19 - 3/11/24

3/2 - 3/18/24

2/25 - 4/26/24

- Project Scope and Limits
- Potential Problems
- Stakeholder Interviews

- Existing Conditions
- Asbuilts
- Surface Data
- Presentation

- Conceptual Alternatives
- Potential Solutions

- Decision Matrix
- Selected 4 Alternatives
- Presentation

- Evaluation Matrix
- Analysis of 4 Alternatives
- Final Presentation
- Poster

# Project Management and Design Team



**Daniel Tedrick**  
Student Project  
Manager



**Eric Jenkins**  
Water Resources  
Engineer



**Gun Jang**  
Geotechnical  
Engineer



**Bora Lena**  
Design Engineer

## Client



**Kimberly Mahoney,**  
P.E.

Associate Vice  
Chancellor, Facilities &  
Campus Services, UAA

## Professional Mentor



**Chris Post, P.E.**

Program Development &  
Standards Manager,  
DOT&PF

## Professional Mentor



**Jesse Moose, P.E.**

Senior Project Manager -  
Capital Projects, ARRC

## Faculty Mentor



**Vinod Vasudevan,**  
Ph.D., P.E.

Associate Professor  
Department of Civil  
Engineering, UAA

**THANK  
YOU**



**Denali Consulting L.L.C.**

**Contact: [datedrick@alaska.edu](mailto:datedrick@alaska.edu)**