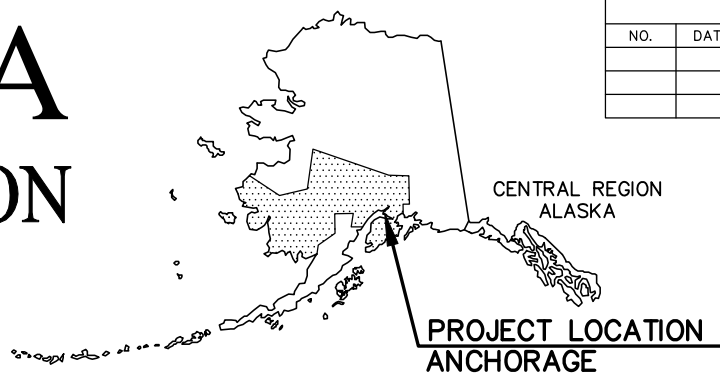


STATE OF ALASKA

DEPARTMENT OF TRANSPORTATION AND PUBLIC FACILITIES



REVISIONS			STATE	PROJECT DESIGNATION	YEAR	SHEET NO.	TOTAL 'A' SHEETS
NO.	DATE	DESCRIPTION	ALASKA	0515(005)/57310	2015	A1	A3
						PLAN SET TOTAL	###
CDS ROUTE: 133750				MILEPOINT: 0.2551 TO 1.2634			
LATITUDE: 61°08'50"N				LONGITUDE: 149°57'07"W			

PROPOSED HIGHWAY PROJECT

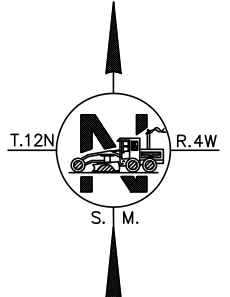
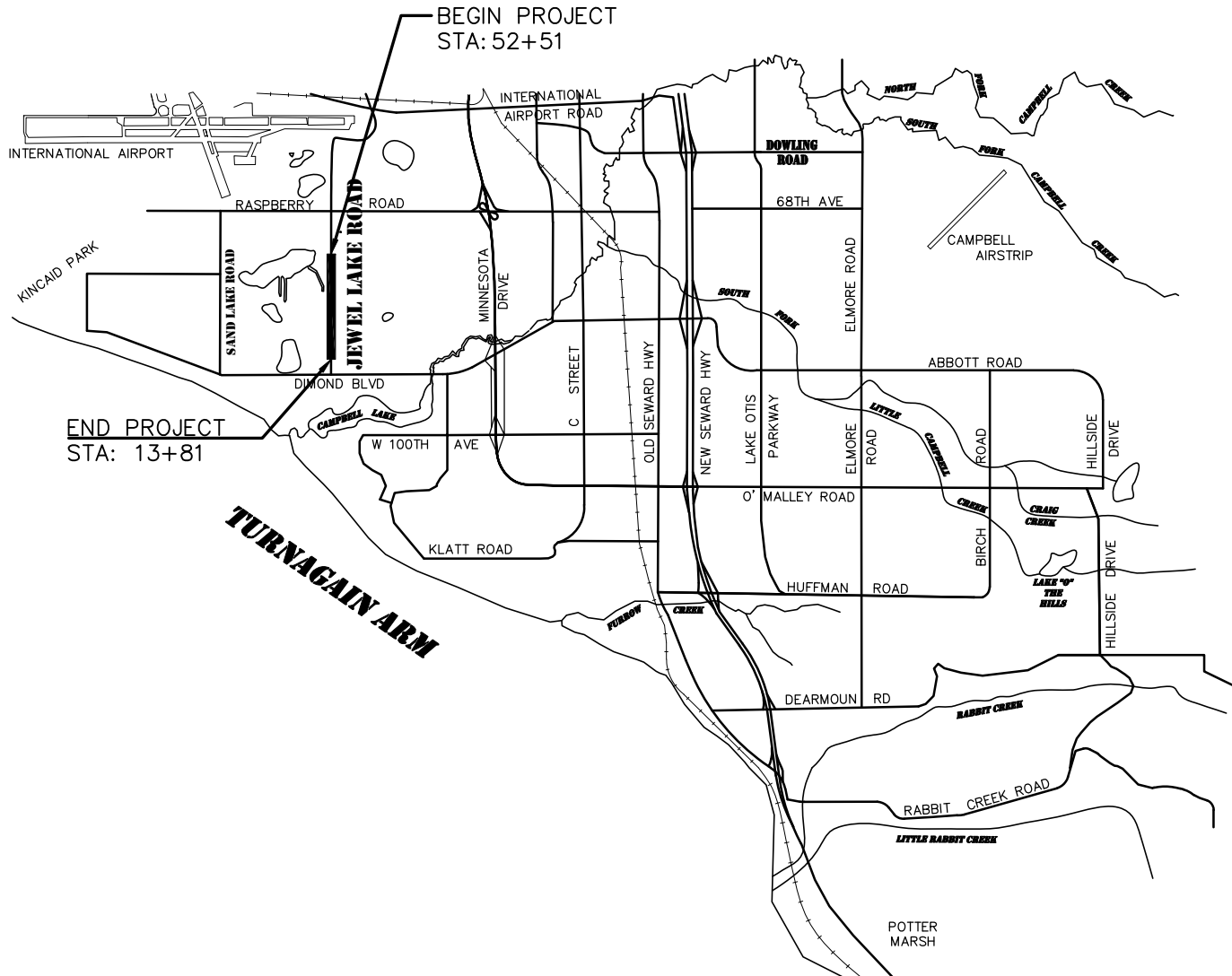
JEWEL LAKE ROAD WIDENING, STRAWBERRY ROAD TO 88TH AVE

PROJECT NO. 0515(005)/57310

GRADING, DRAINAGE, PAVING, PATHWAYS, SIGNING, STRIPING, ILLUMINATION & SIGNALIZATION

PROJECT SUMMARY		
ROADWAY	WIDTH	LENGTH
JEWEL LAKE ROAD	48 FT	1 MILES

DESIGN DESIGNATIONS	
	ROADWAY NAME
FUNCTIONAL CLASS	MINOR COLLECTOR
AADT (EXISTING YEAR)	12,188
AADT (DESIGN YEAR)	16,900
V (MPH)	40
DHV (EXISTING YEAR)	1,250
DHV (DESIGN YEAR)	1,690
T (%)	3.8
D (%)	50/50
ESALS	1,650,000



DESIGNED BY: _____
CHECKED BY: _____
DRAFTED BY: _____

XREFS: _____
N/A

SCALE: _____
N/A

LAYOUT: _____
TITLE SHEET

DATE: _____
TIME: 3:19 PM
4/3/2015

DRAWING LOCATION: F:\CE 438\Survey\...
Project Drawing\Civil 3D 2014\A1_A2_TITLE_SHEETS.dwg

PLANS DEVELOPED BY: SEAWOLF ENGINEERING 2015

STATE OF ALASKA
DEPARTMENT OF TRANSPORTATION & PUBLIC FACILITIES



APPROVED:

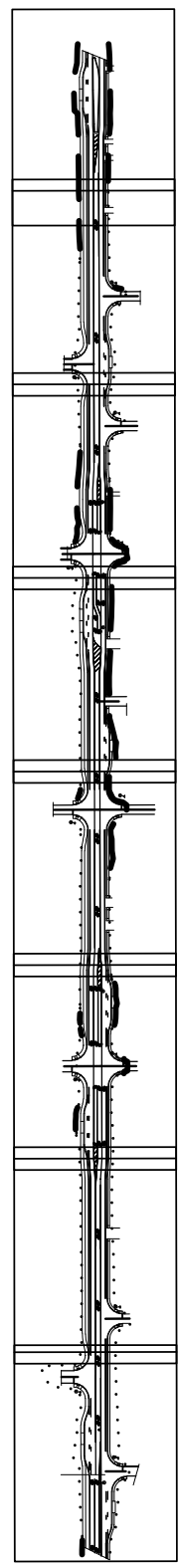
REGIONAL PRECONSTRUCTION ENGINEER _____ DATE _____

CONCUR:

DIRECTOR, DESIGN & CONSTRUCTION _____ DATE _____
CERTIFIED TRUE & CORRECT AS-BUILT OF ACTUAL FIELD CONDITION:

CONSTRUCTION PROJECT MANAGER _____ DATE _____

DRAWING LOCATION
 C:\Users\mihinturn2\AppData\Local\Microsoft\Windows\Temporary Internet Files\Content.IE5\M941VEJW\A1_A2_TITLE_SHEETS.dwg 4/3/2015 3:19 PM
 DATE TIME
 LAYOUT A2
 SCALE
 XREFS
 DESIGNED BY
 DRAFTED BY



F8
F7
F6
F5
F4
F3
F2
F1

REVISIONS			STATE	PROJECT DESIGNATION	YEAR	SHEET NO.	TOTAL SHEETS
NO.	DATE	DESCRIPTION					
			ALASKA	PROJ NUMBER	2013	A2	A4

GENERAL NOTES:

- CONSTRUCT THE IMPROVEMENTS COVERED BY THESE PLANS IN ACCORDANCE WITH THE ALASKA DEPARTMENT OF TRANSPORTATION AND PUBLIC FACILITIES 2015 STANDARD SPECIFICATIONS FOR HIGHWAY CONSTRUCTION AND THE PROJECT SPECIAL PROVISIONS.
- ALL CONSTRUCTION WILL BE CONTAINED WITHIN THE RIGHT-OF-WAY. NO EXCESS MATERIAL SHALL BE DISPOSED OF WITHIN THE RIGHT-OF-WAY, UNLESS SPECIFICALLY CALLED FOR IN THE PLANS OR DIRECTED BY THE ENGINEER.
- ALL PAVEMENT CUTS SHALL BE MADE WITH A SAW, OR ALTERNATE METHOD APPROVED BY THE ENGINEER.
- PLACE TOPSOIL AND SEED ANY AREAS WITHIN THE RIGHT-OF-WAY DISTURBED BY CONSTRUCTION, AND AS DIRECTED BY THE ENGINEER.
- THE EXISTING INFORMATION SHOWN IN THE PLANS IS FROM AS-BUILTS AND HAS BEEN PARTIALLY FIELD VERIFIED. FIELD CONDITIONS MAY NOT BE ACCURATELY REPRESENTED AND/OR MAY HAVE CHANGED. ADJUST INSTALLATIONS AS DIRECTED BY THE ENGINEER.
- CONSTRUCT CURB RAMPS TO AVOID IMPACTING SIGNAL POLE FOUNDATIONS. DO NOT COVER SIGNAL POLE FOUNDATION BOLTS AND BASE PLATES WITH TOPSOIL.
- ADJUST ALL PAVEMENT PENETRATIONS TO FINAL GRADE PRIOR TO TOP LIFT OF PAVING.

IF ANY PAVEMENT PENETRATION REQUIRES GRADE ADJUSTMENT AFTER FINAL LIFT PAVING, AS DETERMINED BY THE ENGINEER, SAW CUT A NEAT LINE ALONG THE PAVEMENT TO BE REMOVED. USE AN INFRARED HEATER TO HEAT THE EXISTING PAVEMENT, EQUIPMENT AND MAXIMUM TEMPERATURE SHALL BE APPROVED BY THE ENGINEER. REPLACE THE REMOVED ASPHALT WITH NEW HOT MIX ASPHALT AND THOROUGHLY COMPACT. SEAL JOINTS AT LEAST 12 INCHES WIDE USING ASPHALT SYSTEMS GSB-88 OR APPROVED EQUAL, WHILE THE HOT MIX ASPHALT IS CLEAN, FREE OF MOISTURE AND PRIOR TO STRIPING.

THERE SHALL BE NO PAYMENT FOR ADDITIONAL WORK CAUSED BY FAILURE TO ADJUST PAVEMENT PENETRATIONS TO FINAL GRADE.
- ON STANDARD DRAWING C-03.10, REPLACE THE SAFETY FENCE AND TYPE II BARRICADE OR TUBULAR MARKINGS SHOWN IN THE TYPICAL SECTION WITH ADA COMPLIANT BARRICADES.

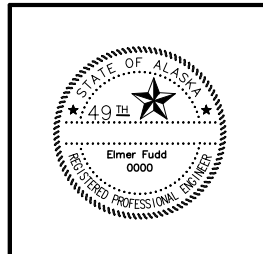
INDEX	
SHEET NO.	DESCRIPTION
A1	TITLE SHEET
A2	SHEET LAYOUT, INDEX AND GENERAL NOTES
A3	LEGEND
A4	SURVEY CONTROL SHEETS
B#-B#	TYPICAL SECTIONS
C1	ESTIMATE OF QUANTITIES
D#-D#	SUMMARY TABLES
E#-E#	DETAIL SHEETS
F#-F#	PLAN AND PROFILE SHEETS
G#-G#	GRADING PLANS
H#-H###	SIGNING, STRIPING, ILLUMINATION & SIGNALIZATION
K#-K#	AUTOMATED TRAFFIC RECORDER PLANS
L#	LANDSCAPING SHEETS
M#	RETAINING WALL SHEETS
N#	BRIDGE SHEETS
R#	RIGHT-OF-WAY MAPS
T#	TRAFFIC CONTROL PLANS (WHEN REQUIRED)
U#	UTILITY SHEETS

THE FOLLOWING REGIONAL DRAWINGS APPLY TO THIS PROJECT:
 CR-T-01.00, CR-T-25.10, CR-T-26.10

IN THE EVENT OF A CONFLICT, REGIONAL DRAWINGS SUPERSEDE STANDARD DRAWINGS.

THE FOLLOWING STANDARD DRAWINGS APPLY TO THIS PROJECT:
 C-03.10*
 S-00.10*, S-05.01, S-22.00, S-23.00
 S-30.03, S-31.00, S-32.00
 T-05.10

* AS MODIFIED HEREIN.



STATE OF ALASKA
 DEPARTMENT OF TRANSPORTATION
 AND PUBLIC FACILITIES
**JEWEL LAKE ROAD, STRAWBERRY
 ROAD TO 88TH AVENUE WIDENING**

DESIGNED BY: []
 CHECKED BY: []
 DATE: 6/4/2013 12:16 PM
 SCALE: N/A
 LAYOUT: A3
 DRAWING LOCATION: F:\handout\A3 LEGEND_V11.dwg

UTILITIES

	EXISTING	PROPOSED
PIPELINES:		
STORM DRAIN STRUCTURE AND PIPE NUMBERS, APPLICABLE IF SHOWN		
STORM DRAIN		
MANHOLE STORM DRAIN		
CURB INLET CATCH BASIN		
FIELD INLET CATCH BASIN		
PIPE CULVERT w/ END SECTION		
CLEANOUT		
SANITARY SEWER		
MANHOLE SANITARY SEWER		
SEPTIC VENTS		
WATER		
FIRE HYDRANT		
WELL		
VALVE OR RISER		
NATURAL GAS		
OIL OR GASOLINE PIPELINE		
ELECTRIC (OVERHEAD)		
ELECTRIC (DIRECT BURY)		
ELECTRIC (OVERHEAD)		
UTILITY POLE		
UTILITY POLE WITH LUMINAIRE		
GUY POLE		
GUY WIRE ANCHOR		
TRANSMISSION TOWER [WOOD]		
TRANSMISSION TOWER [STEEL]		
ELECTRICAL PEDESTAL		
ELECTRICAL TRANSFORMER		
ELECTRIC METER		
ELECTRICAL OUTLET		
ELECTRIC MANHOLE		
TELEPHONE (OVERHEAD)		
TELEPHONE (DIRECT BURY)		
TELEPHONE (DIRECT BURY)		
TELEPHONE PEDESTAL		
TELEPHONE MANHOLE		
FIBER OPTIC		
FIBER OPTIC MANHOLE		
CABLE TV (OVERHEAD)		
CABLE T.V. PEDESTAL		
SATELLITE DISH		
U.G. DUCT (E, T, FO)		

UTILITIES

	EXISTING	PROPOSED
ELECTROLIER		
HIGHTOWER		
SIGNAL POLE WITH MAST		
PEDESTRIAN PUSH BUTTON		
RURAL BEACON		
SCHOOL ZONE BEACON		
RIGHT OF WAY		
PRIMARY CENTERLINE MONUMENT		
SECONDARY CENTERLINE MONUMENT		
PROJECT RIGHT-OF-WAY LINES		
CONTROLLED ACCESS LINE		
TEMPORARY CONSTRUCTION EASEMENT/PERMIT		
PROJECT CENTERLINE		
RAILROAD CENTERLINE		

EXISTING TOPOGRAPHY

CONIFER TREE OR TREES		
DECIDUOUS TREE OR TREES		
SHRUB OR SHRUBS		
WETLANDS		
CREEK		
RIVER		
LAKE / POND		
EXISTING/PROPOSED		
DRAINAGE FLOW		
CONTOURS - MAJOR		
CONTOURS - MINOR		

MISCELLANEOUS

	EXISTING	PROPOSED
BUILDING		
TANKS ABOVE GROUND		
TANKS UNDERGROUND		
PRIVATE SIGN		
POST/BOLLARDS		
MAILBOX		
TRAFFIC SIGN		
TRAFFIC SIGN POST #		
VENT		

REVISIONS		
NO.	DATE	DESCRIPTION

STATE	PROJECT DESIGNATION	YEAR	SHEET NO.	TOTAL SHEETS
ALASKA	0515(005)/57310	2015	A3	AXX

ROADWAY

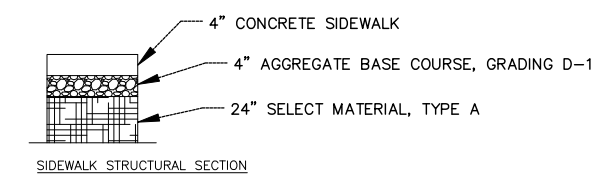
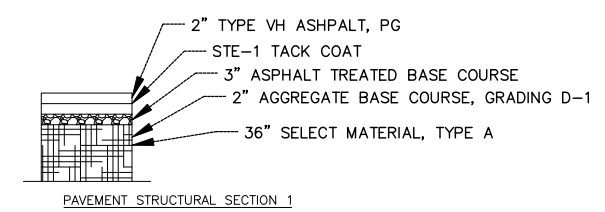
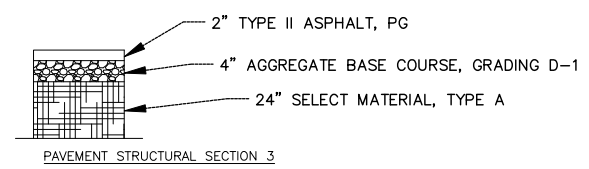
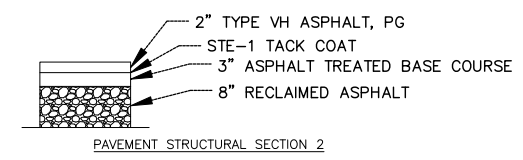
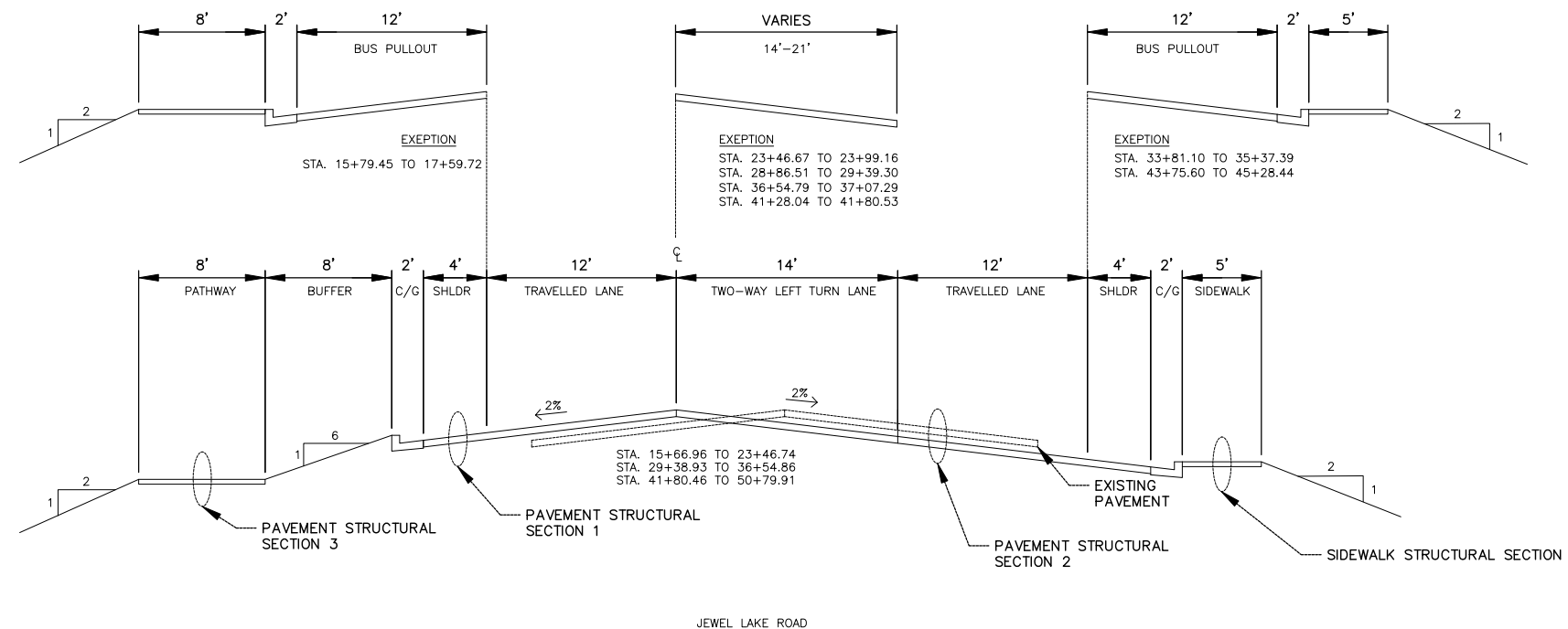
	EXISTING	PROPOSED
ROADWAY OBLITERATION		
LIMIT OF CUT SLOPE		
LIMIT OF FILL SLOPE		
EDGE OF PAVEMENT		
CONCRETE CURB		
CONCRETE CURB & GUTTER		
CONCRETE CURB CUT		
SIDEWALK		
CURB RAMPS		
PARALLEL CURB RAMP		
PERPENDICULAR CURB RAMP		
MID-BLOCK CURB RAMP		
UNIDIRECTIONAL CURB RAMP		
DETECTABLE WARNING TILES		
DRIVEWAY APPROACH		
GRAVEL EDGE		
PATH / TRAIL		
BRIDGE		
TUNNEL		
NOISE BARRIER		
FENCE		
RETAINING WALL		
HEAD & WINGWALLS		
GUARDRAIL		
END SECTION		
PARALLEL GUARDRAIL SECTION		
SPECIAL DITCH		
BOTTOM OF DITCH		
RIPRAP		
BOULDER OR BOULDERS		



STATE OF ALASKA
 DEPARTMENT OF TRANSPORTATION
 AND PUBLIC FACILITIES
**JEWEL LAKE ROAD WIDENING,
 STRAWBERRY ROAD TO 88TH
 AVENUE**
 LEGEND SHEET

REVISIONS			STATE	PROJECT DESIGNATION	YEAR	SHEET NO.	TOTAL SHEETS
NO.	DATE	DESCRIPTION					
			ALASKA	0515(005)/57310	2015	B1	B3

DESIGNED BY: _____ CHECKED BY: _____ DRAWN BY: _____
 XREFS: _____
 SCALE: _____
 LAYOUT: LAYOUT1
 DATE TIME: 4/18/2015 3:19 PM
 DRAWING LOCATION: F:\CE 438\Survey\L Project Drawing\Civil_3D 2014\Working Folder\B-sheets.dwg

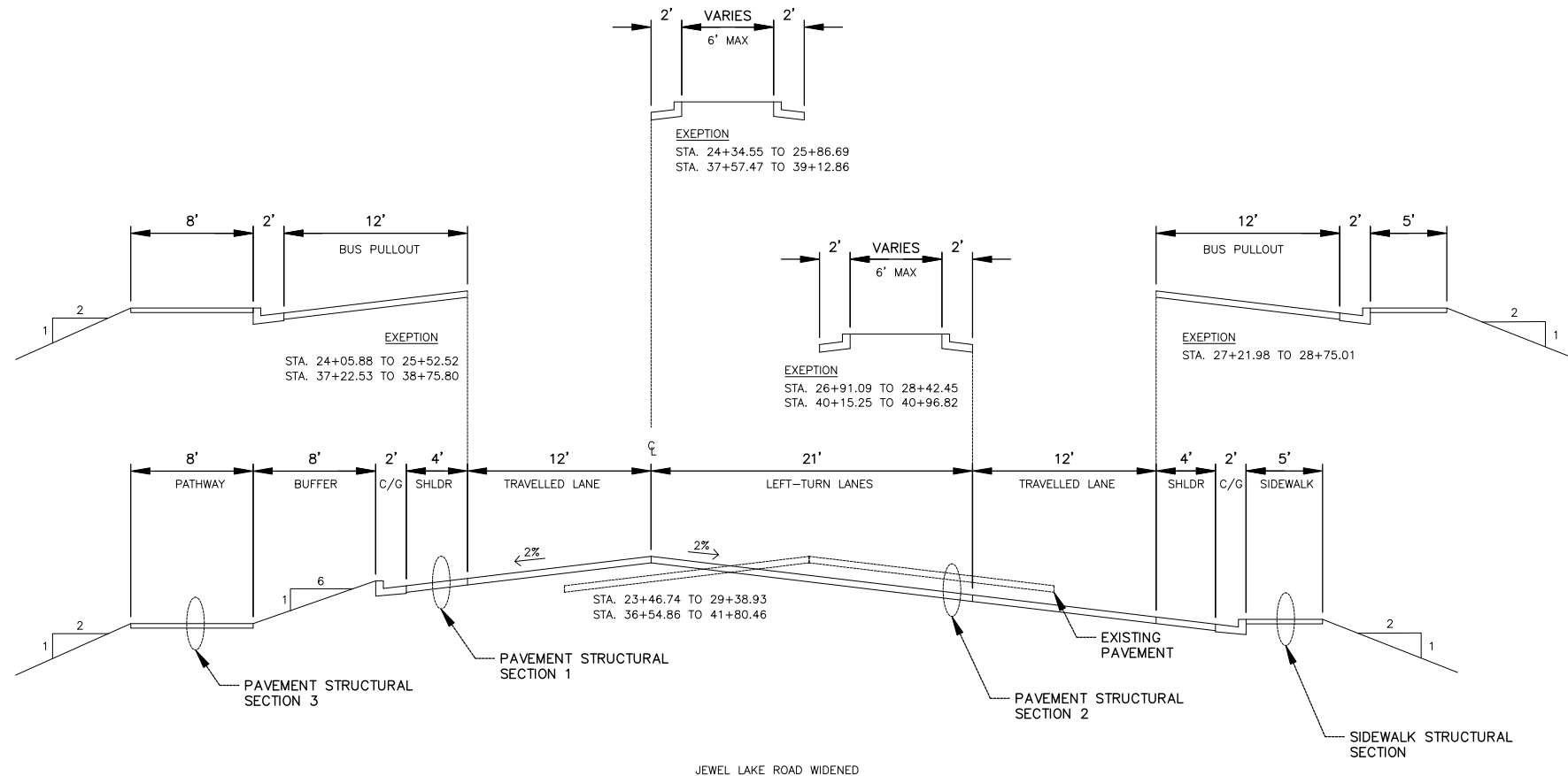


Elmer Fudd
0000

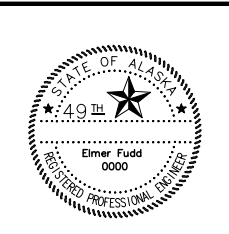
STATE OF ALASKA
DEPARTMENT OF TRANSPORTATION
AND PUBLIC FACILITIES

**JEWELL LAKE ROAD, WIDENING
STRAWBERRY ROAD TO 88TH
AVENUE**

REVISIONS			STATE	PROJECT DESIGNATION	YEAR	SHEET NO.	TOTAL SHEETS
NO.	DATE	DESCRIPTION					
			ALASKA	0515(005)/57310	2015	B2	B3



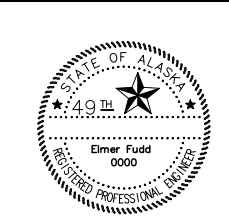
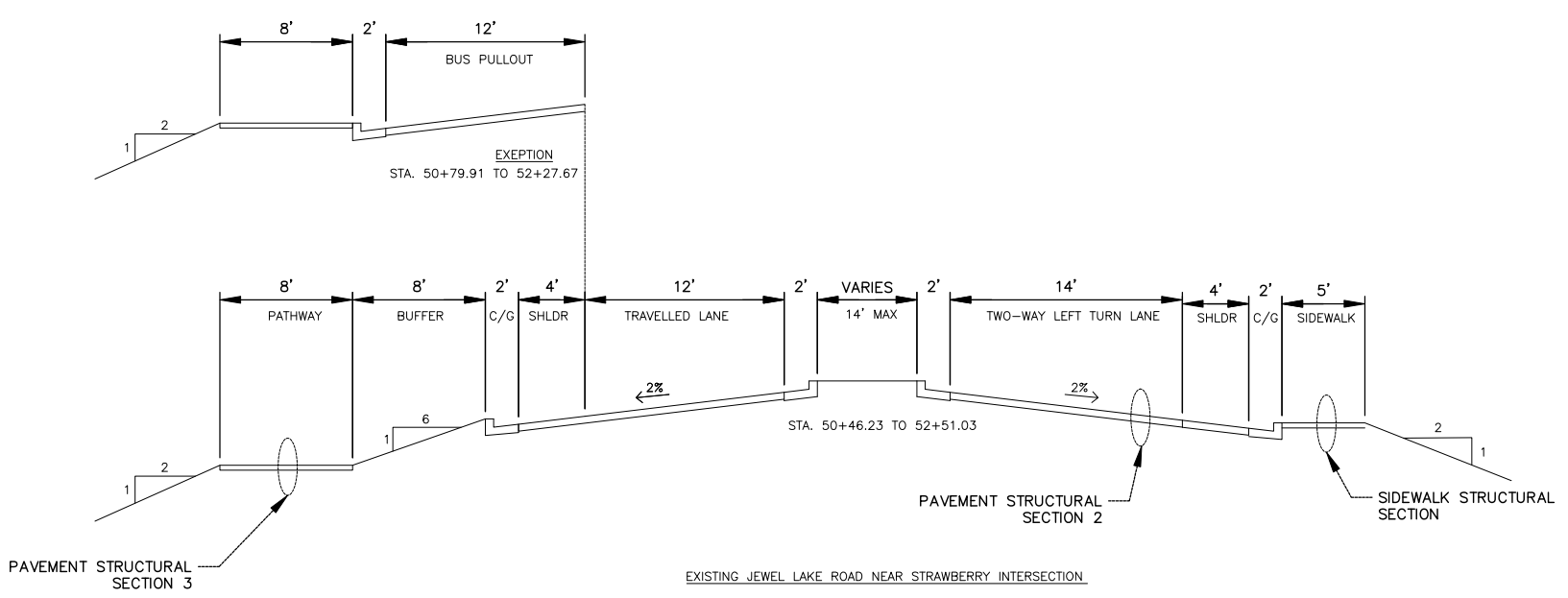
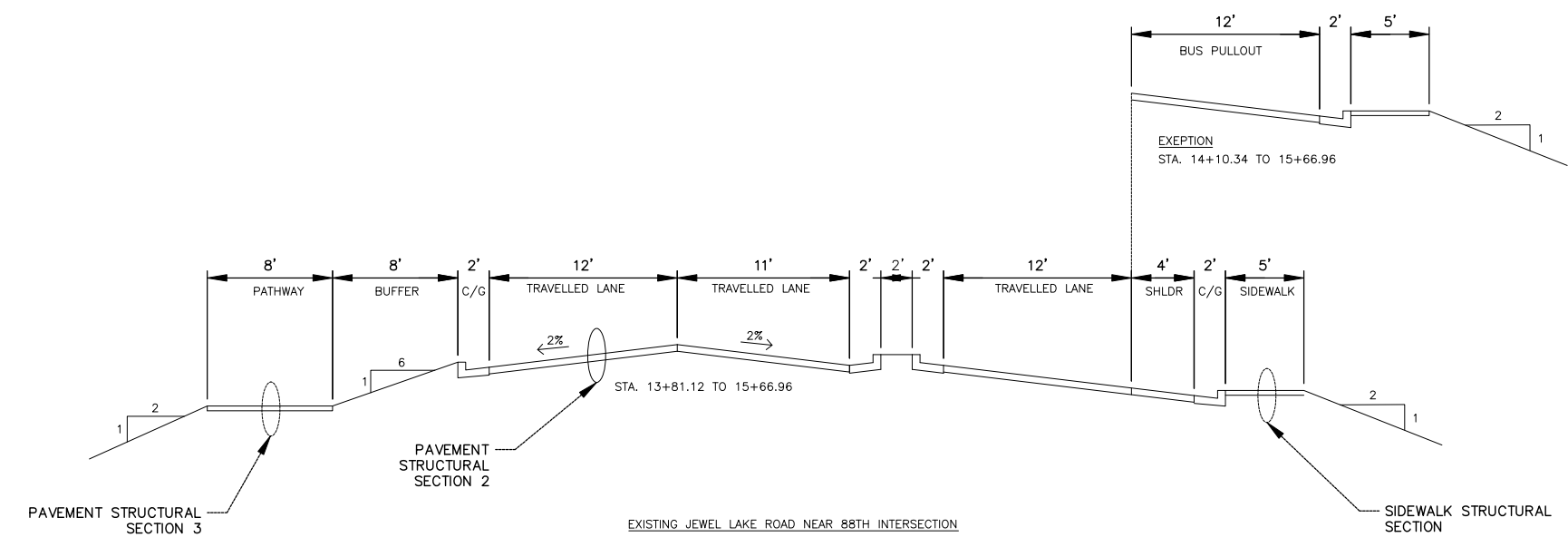
DRAWING LOCATION: F:\CE 438\Survey\L Project Drawing\Civil 3D 2014\Working Folder\B-sheets.dwg
 DATE TIME: 4/18/2015 5:19 PM
 LAYOUT: LAYOUT1 (2)
 SCALE:
 DESIGNED BY: XREFS
 CHECKED BY:
 DRAWN BY:



STATE OF ALASKA
 DEPARTMENT OF TRANSPORTATION
 AND PUBLIC FACILITIES
**JEWELL LAKE ROAD, WIDENING
 STRAWBERRY ROAD TO 88TH
 AVENUE**

DRAWING LOCATION: F:\CE 438\Survey\L Project Drawing\Civil_3D 2014\Working Folder_B=sheets.dwg
 DATE TIME: 4/18/2015 5:19 PM
 LAYOUT: LAYOUT1 (3)
 SCALE:
 DESIGNED BY: XREFS
 CHECKED BY:
 DRAWN BY:

REVISIONS			STATE	PROJECT DESIGNATION	YEAR	SHEET NO.	TOTAL SHEETS
NO.	DATE	DESCRIPTION	ALASKA	0515(005)/57310	2015	B3	B3



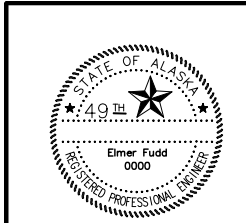
STATE OF ALASKA
 DEPARTMENT OF TRANSPORTATION
 AND PUBLIC FACILITIES
**JEWEL LAKE ROAD, WIDENING
 STRAWBERRY ROAD TO 88TH
 AVENUE**

DRAWING LOCATION: F:\CE 438\Survey\L... Project Drawing\Civil 3D 2014\C1.dwg
 DATE TIME: 4/20/2015 10:30 AM
 LAYOUT: CI
 SCALE
 REFS
 DESIGNED BY
 CHECKED BY
 DRAFTED BY

ESTIMATE OF QUANTITIES			
ITEM NO.	ITEM	UNIT	TOTAL QUANTITY
201(1A)	CLEARING	ACRE	1.7
202(1)	REMOVAL OF STRUCTURES AND OBSTRUCTIONS	L.S.	ALL REQUIRED
202(2)	REMOVAL OF PAVEMENT	SQUARE YARD	22,435
202(4)	REMOVAL OF CULVERT PIPE	LINEAR FOOT	1,383
202(9)	REMOVAL OF CURB AND GUTTER	LINEAR FOOT	997
202(10A)	REMOVE AND REINSTALL SINGLE MAILBOX	EACH	3
202(19)	REMOVE AND RELOCATE NON-STANDARD SIGN	EACH	2
203(3)	UNCLASSIFIED EXCAVATION	CUBIC YARD	8,888
203(6A)	BORROW, TYPE A	TON	12,937
203(6C)	BORROW, TYPE C	TON	180
301(1)	AGGREGATE BASE COURSE, GRADING D-1	TON	3,604
306(1)	ATB	TON	4,376
401(1A)	HOT MIX ASPHALT, TYPE II; CLASS A	TON	638
401(2)	ASPHALT CEMENT, GRADE PG 58-34	TON	35
401(6)	ASPHALT PRICE ADJUSTMENT - QUALITY	C.S.	ALL REQUIRED
401(10)	ASPHALT MATERIAL PRICE ADJUSTMENT - UNIT PRICE	C.S.	ALL REQUIRED
402(1)	STE-1 ASPHALT FOR TACK COAT	TON	12
408(1H)	HOT MIX ASPHALT, TYPE VH	TON	2977
408(2)	ASPHALT CEMENT, GRADE PG 58-34	TON	158
408(6)	ASPHALT PRICE ADJUSTMENT - QUALITY	C.S.	ALL REQUIRED
408(10)	ASPHALT MATERIAL PRICE ADJUSTMENT	C.S.	ALL REQUIRED
603(21-24)	24 INCH CPEP	LINEAR FOOT	4,807
603(20-24)	END SECTION FOR 24 INCH PIPE	EACH	1
604(1B)	STORM DRAIN MANHOLE, TYPE II	EACH	25
604(4)	ADJUST EXISTING MANHOLE	EACH	10
604(5A)	INLET, TYPE A	EACH	42
608(1A)	CONCRETE SIDEWALK, 4 INCHES THICK	SQUARE YARD	2040
608(6)	CURB RAMP	EACH	24
608(7)	ASPHALT PATHWAY	TON	424
608(10)	DETECTABLE WARNING - TILES	EACH	24
608(13E)	CONCRETE, TYPE V, 4 IN. THICK, COLORED AND IMPRINTED	SQUARE YARD	335
609(2A)	CURB AND GUTTER, ALL TYPES	LINEAR FOOT	8,990
609(2B)	ISLAND NOSE	EACH	8
615(1)	STANDARD SIGN	SQUARE FOOT	200
615(6)	SALVAGE SIGN	EACH	75
618(2)	SEEDING	ACRE	2
620(1)	TOPSOIL	SQUARE YARD	8,600
627(10)	ADJUSTMENT OF VALVE BOX	EACH	7
630(1)	GEOTEXTILE, SEPARATION	SQUARE YARD	18,177
636(1)	GABION WALL	CUBIC YARD	181
639(4)	DRIVEWAY	EACH	12
639(6)	APPROACH	EACH	12

REVISIONS			STATE	PROJECT DESIGNATION	YEAR	SHEET NO.	TOTAL SHEETS
NO.	DATE	DESCRIPTION	ALASKA	0515(005)/57310	2015	C1	C2

ESTIMATE OF QUANTITIES			
ITEM NO.	ITEM	UNIT	TOTAL QUANTITY
640(1)	MOBILIZATION AND DEMOBILIZATION	L.S.	ALL REQUIRED
641(1)	EROSION, SEDIMENT, AND POLLUTION CONTROL ADMINISTRATION	L.S.	ALL REQUIRED
641(2)	TEMPORARY EROSION, SEDIMENT, AND POLLUTION CONTROL	C.S.	ALL REQUIRED
641(6)	WITHOLDING	C.S.	ALL REQUIRED
641(7)	SWPPP MANAGER	L.S.	ALL REQUIRED
642(1)	CONSTRUCTION SURVEYING	L.S.	ALL REQUIRED
642(3)	THREE PERSON SURVEY PARTY	HOUR	80
643(2)	TRAFFIC MAINTENANCE	L.S.	ALL REQUIRED
643(3)	PERMANENT CONSTRUCTION SIGNS	L.S.	ALL REQUIRED
643(15)	FLAGGING	C.S.	ALL REQUIRED
643(23)	TRAFFIC PRICE ADJUSTMENT	C.S.	ALL REQUIRED
643(25)	TRAFFIC CONTROL	C.S.	ALL REQUIRED
644(1)	FIELD OFFICE	L.S.	ALL REQUIRED
644(10)	ENGINEERING COMMUNICATIONS	C.S.	ALL REQUIRED
646(1)	CPM SCHEDULING	L.S.	ALL REQUIRED
647(1)	WIDE PAD DOZER, 65 HP MIN	C.S.	ALL REQUIRED
647(5)	BACKHOE, 4WD, 1 CY BUCKET, 75 HP MIN, 15 FT DEPTH	C.S.	ALL REQUIRED
660(3)	HIGHWAY LIGHTING SYSTEM COMPLETE	L.S.	ALL REQUIRED
660(22)	ILLUMINATION PRICE ADJUSTMENT	C.S.	ALL REQUIRED
670(10D)	MMA PAVEMENT MARKINGS, LONGITUDINAL INLAID	LINEAR FOOT	21,752
670(10E)	MMA PAVEMENT MARKINGS, SYMBOLS AND ARROWS INLAID	EACH	42
670(10F)	MMA PAVEMENT MARKINGS, TRANSVERSE AND GORE INLAID	LINEAR FOOT	87
682(1)	VAC-TRUCK POTHOLE	C.S.	ALL REQUIRED




STATE OF ALASKA
 DEPARTMENT OF TRANSPORTATION
 AND PUBLIC FACILITIES
**JEWEL LAKE ROAD WIDENING,
 STRAWBERRY ROAD TO 88TH
 AVENUE**

ESTIMATE OF QUANTITIES

DRAWING LOCATION: F:\CE 438\Survey\L. Project Drawing\Civil 3D 2014\C1.dwg
 DATE: 4/20/2015 10:30 AM
 LAYOUT: C2
 SCALE:
 XREFS:
 DESIGNED BY:
 CHECKED BY:
 DRAFTED BY:

REVISIONS			STATE	PROJECT DESIGNATION	YEAR	SHEET NO.	TOTAL SHEETS
NO.	DATE	DESCRIPTION	ALASKA	0515(005)/57310	2015	C2	C2

ITEM NO.	ITEM DESCRIPTION	ESTIMATING FACTORS
203(6A)	BORROW, TYPE A	144 LB/C.F.
301(1)	AGGREGATE BASE COURSE, GRADING D-1	144 LB/C.F.
306(1)	ATB	150 LB/C.F.
306(2)	ASPHALT CEMENT, GRADE PG 52-28	5% OF ITEM 306(1) TOTAL WEIGHT
401(1A)	HOT MIX ASPHALT, TYPE II; CLASS A	151 LB/C.F.
401(2)	ASPHALT CEMENT, GRADE PG 52-34	5.5% OF ITEM 401(1A) TOTAL WEIGHT
408(1H)	HOT MIX ASPHALT, TYPE VH	153 LB/C.F.
408(2)	ASPHALT CEMENT, GRADE PG 58-34	5% OF ITEM 408(1H) TOTAL WEIGHT
618(2)	SEEDING	2 LBS. / 1000 S.F.

	<p>STATE OF ALASKA DEPARTMENT OF TRANSPORTATION AND PUBLIC FACILITIES</p> <p>JEWEL LAKE ROAD WIDENING, STRAWBERRY ROAD TO 88TH AVENUE</p> <p>ESTIMATE OF QUANTITIES</p>
---	--

REVISIONS			STATE	PROJECT DESIGNATION	YEAR	SHEET NO.	TOTAL SHEETS
NO.	DATE	DESCRIPTION					
			ALASKA	0515(005)/57310	2015	D1	D5

201(3A)				
CLEARING AND GRUBBING				
SHEET	FROM STATION	TO STATION	QUANTITY (ACRE)	REMARKS
F1-F8	13+81.12	52+51.03	1.7	
BASE BID TOTAL:			1.7	ACRE

202(2)				
REMOVAL OF PAVEMENT				
SHEET	FROM STATION	TO STATION	QUANTITY (SY)	REMARKS
F1-F8	13+81.12	52+51.03	22435.11	
BASE BID TOTAL:			22435	SY

202(4)						
REMOVAL OF CULVERT PIPE						
SHEET	FROM STATION	OFFSET	TO STATION	OFFSET	QUANTITY (LF)	REMARKS
F1	16+23.54	75.35 RT	16+24.77	32.37 RT	43	
F1	16+24.77	32.37 RT	16+90.13	31.04 RT	65	
F1	16+90.13	31.04RT	16+91.76	17.96 LT	13	
F1	16+91.76	17.96 LT	18+37.77	17.89 LT	146	
F1	18+37.77	17.89 LT	18+37.23	50.26 LT	32	
F1	16+24.77	32.37 RT	16+26.34	37.78 LT	5	
F1	15+26.05	58.51 RT	16+17.12	71.10 RT	91	
F2	21+79.63	37.35 RT	22+31.63	37.00 RT	52	
F3	24+78.95	47.77 RT	25+56.26	46.15 RT	77	
F3	25+91.42	39.82 RT	26+78.27	39.81 RT	86	
F3	27+54.05	47.43 LT	27+74.53	47.95 LT	20	
F3	29+72.28	36.68 RT	30+28.25	34.71 RT	56	
F3	30+34.93	34.99 RT	30+80.35	33.75 RT	45	
F3	32+77.65	30.17 RT	33+39.85	31.07 RT	62	
F3	33+47.62	31.98 RT	34+69.91	31.01 RT	122	
F4	35+05.47	30.64 RT	35+33.46	31.08 RT	28	
F4	35+79.45	31.02 RT	36+07.64	31.19 RT	28	
F4	37+08.44	31.16 RT	37+48.81	30.81 RT	40	
F4	39+40.30	32.82 RT	40+02.09	32.32 RT	62	
F5	41+04.97	30.30 RT	41+35.21	30.67 RT	30	
F5	42+69.37	48.87 RT	43+21.54	32.13 RT	55	
F5	43+23.65	35.35 RT	43+19.75	49.17 RT	14	
F5	43+69.76	35.99 RT	44+13.71	35.94 RT	43	
F6	44+16.99	25.36 LT			40	
F6	44+33.89	23.32 LT	44+18.77	24.56 LT	15	
F6	44+35.50	23.32 LT	44+33.89	34.26 RT	11	
F6	44+71.66	35.30 RT	44+76.59	63.64 RT	29	
F7	45+95.96	33.96 RT	46+12.32	50.08 RT	23	
F7	45+98.41	32.28 RT	46+51.96	31.11 RT	54	
F7	48+39.72	28.07 RT	48+69.79	29.35 RT	30	
BASE BID TOTAL:					1383	

202(3)						
REMOVAL OF SIDEWALK						
SHEET	FROM STATION	OFFSET	TO STATION	OFFSET	QUANTITY	REMARKS
F1	13+66.61	33.13 RT	15+58.58	46.35 RT	145	
F5-F8	33+30.94	40.53 RT	52+48.94	46.23 RT	2579	
BASE BID TOTAL:					2724	SY



STATE OF ALASKA
DEPARTMENT OF TRANSPORTATION
AND PUBLIC FACILITIES
**JEWEL LAKE ROAD WIDENING,
STRAWBERRY ROAD TO 88TH
AVENUE**

DRAWING LOCATION: F:\CE 438\Survey\L Project Drawing\Civil_3D 2014\Working Folder_D-SHEETS - V14.dwg
 DATE TIME: 4/20/2015 4:11 PM
 LAYOUT: D1
 SCALE:
 XREFS:
 DESIGNED BY:
 CHECKED BY:
 DRAWN BY:

REVISIONS			STATE	PROJECT DESIGNATION	YEAR	SHEET NO.	TOTAL SHEETS
NO.	DATE	DESCRIPTION					
			ALASKA	0515(005)/57310	2015	D2	D5

DRAWING LOCATION: F:\CE 438\Survey\Project Drawing\Civil_3D_2014\Working Folder_D-SHEETS - V14.dwg
 DATE TIME: 4/20/2015 4:11 PM
 LAYOUT: D2
 SCALE:
 XREFS:
 DESIGNED BY:
 CHECKED BY:
 DRAWN BY:

202(9)				
REMOVAL OF CURB AND GUTTER				
SHEET	FROM STATION	TO STATION	QUANTITY (LF)	REMARKS
F1	13+88.80	15+69.80	252.33	88TH TO FIRE STATION
F1	13+89.10	17+98.05	411.3	88TH TO 86TH LT
F1	18+18.97	18+53.01	30	APPROACH AT 86TH LT
F6	39+46.24	39+77.46	30	APPROACH AT 80TH LT
F7	44+36.66	44+66.85	30	APPROACH AT 79TH LT
F8	51+01.28	52+59.00	158.01	STRAWBERRY LT
F8	51+52.06	52+37.46	85.43	STRAWBERRY RT
BASE BID TOTAL:			997	LF

202(10A)				
REMOVE AND REINSTALL SINGLE MAIL BOX				
SHEET	STATION	OFFSET	QUANTITY (EA)	REMARKS
F6	40+80.17	28.63 RT	1	
F7	48+80.99	27.46 RT	1	
F8	50+06.38	32.79 RT	1	
BASE BID TOTAL:			3	EA

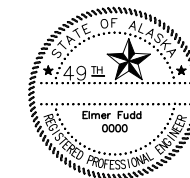
202(19)				
REMOVE AND RELOCATE NON-STANDARD SIGN				
SHEET	STATION	OFFSET	QUANTITY (EA)	REMARKS
F1	17+30.01	47.63 LT	1	EAGLE LANDING SOUTH
F6	39+33.63	57.06 RT	1	SIGN AT 80TH RT
BASE BID TOTAL:			2	EA

301(1)					
AGGREGATE BASE COURSE, GRADING D-1					
SHEET	FROM STATION	TO STATION	OFFSET	QUANTITY (TON)	REMARKS
F1-F8	13+81.12	52+51.03	CL	2652	ROADWAY
F1-F8	13+81.12	52+51.03	LT	382	PATHWAY
F1-F8	13+81.12	52+51.03	RT	242	SIDEWALK
BASE BID TOTAL:				3604	TON

306(1)					
ATB					
SHEET	FROM STATION	TO STATION	OFFSET	QUANTITY (TON)	REMARKS
F1-F8	13+81.12	52+51.03	CL	4376	ROADWAY
BASE BID TOTAL:				4376	TON

401(1A)					
HOT MIX ASPHALT, TYPE II; CLASS A					
SHEET	FROM STATION	TO STATION	OFFSET	QUANTITY (TON)	REMARKS
F1-F8	13+81.12	52+51.03	CL	638	ROADWAY
BASE BID TOTAL:				638	TON

402(1)					
STE-1 ASPHALT FOR TACK COAT					
SHEET	FROM STATION	TO STATION	OFFSET	QUANTITY (TON)	REMARKS
F1-F8	13+81.12	52+51.03	CL	11.6	ROADWAY
BASE BID TOTAL:				11.6	TON



STATE OF ALASKA
 DEPARTMENT OF TRANSPORTATION
 AND PUBLIC FACILITIES
**JEWEL LAKE ROAD WIDENING,
 STRAWBERRY ROAD TO 88TH
 AVENUE**

REVISIONS			STATE	PROJECT DESIGNATION	YEAR	SHEET NO.	TOTAL SHEETS
NO.	DATE	DESCRIPTION					
			ALASKA	0515(005)/57310	2015	D3	D5

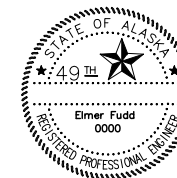
408(1H)					
HOT MIX ASPHALT, TYPE VH					
SHEET	FROM STATION	TO STATION	OFFSET	QUANTITY (TON)	REMARKS
F1-F8	13+81.12	52+51.03	CL	2977	ROADWAY
BASE BID TOTAL:				2977	TON

608(6)				
CURB RAMP				
SHEET	STATION	OFFSET	QUANTITY (EA)	REMARKS
F1	15+77.87	68.89 RT	1	
F1	16+05.51	58.01 RT	1	
F1	18+17.89	43.61 LT	1	
F1	18+53.98	43.43 LT	1	
F2	19+72.51	58.77 RT	1	
F2	19+99.86	58.32 RT	1	
F3	26+22.05	47.40 LT	1	
F3	26+24.58	61.52 RT	1	
F3	26+52.15	61.85 RT	1	
F3	26+54.73	47.59 LT	1	
F4	32+87.29	58.52 RT	1	
F4	32+83.93	36.55 LT	1	
F5	33+1480	44.05 LT	1	
F5	33+14.66	58.53 RT	1	
F6	39+48.01	61.44 RT	1	
F6	39+45.38	47.08 LT	1	
F6	39+75.57	61.85 RT	1	
F6	39+78.17	47.55 LT	1	
F6	42+78.32	58.34 RT	1	
F6	43+05.93	57.91 RT	1	
F7	44+35.98	44.01 LT	1	
F7	44+67.62	44.17 LT	1	
F7	46+13.57	58.15 RT	1	
F7	46+41.09	58.38 RT	1	
BASE BID TOTAL:			24	EA

604(4)				
ADJUST EXISTING MANHOLE				
SHEET	STATION	OFFSET	QUANTITY (EA)	REMARKS
F1	16+80.15	52.87 RT	1	SS
F1	16+91.76	17.96 LT	1	SD
F1	18+37.77	17.89 LT	1	SD
F1	18+37.23	50.59 LT	1	SD
F2	19+55.90	51.59 LT	1	SS
F3	26+55.75	52.88 RT	1	SS
F6	42+82.74	51.88 RT	1	SS
F7	44+33.50	23.32 LT	1	SD
F7	44+64.53	51.30 RT	1	SS
F7	44+70.54	41.31 RT	1	SS
F7	46+15.78	51.67 RT	1	SS
BASE BID TOTAL:			11	EA

608(1A)				
CONCRETE SIDEWALK, 4 INCH THICK				
SHEET	FROM STATION	TO STATION	AREA (SY)	REMARKS
F1	13+64.57	15+76.17	95	88TH TO FIRESTATION
F1	16+07.68	19+70.62	219	FIRESTATION TO 86TH
F2	20+01.62	26+22.94	347	86TH TO 84TH
F3	26+54.30	32+85.48	352	84TH TO 82ND
F4	33+16.48	39+46.40	344	82ND TO 80TH
F5	39+76.84	42+76.56	177	80TH TO 79TH
F6	43+07.41	46+12.39	197	79TH TO 78TH
F7	46+42.87	52+36.25	308	78TH TO STRAWBERRY
BASE BID TOTAL:			2040	SY

608(7)					
ASPHALT PATHWAY					
SHEET	FROM STATION	TO STATION	OFFSET	VOLUME (TON)	REMARKS
F1	13+96.26	18+14.85	LT	48	
F2	18+56.95	26+18.01	LT	78.93	
F3	26+58.10	32+83.91	LT	65.30	
F4	33+17.98	39+41.33	LT	65.06	
F5	39+81.35	44+32.82	LT	47.72	
F7	44+70.84	52+60.78	LT	80.55	
BASE BID TOTAL:				424	TON



STATE OF ALASKA
DEPARTMENT OF TRANSPORTATION
AND PUBLIC FACILITIES
**JEWEL LAKE ROAD WIDENING,
STRAWBERRY ROAD TO 88TH
AVENUE**

DRAWING LOCATION: F:\CE 438\Survey\L Project Drawing\Civil_3D 2014\Working Folder_D-SHEETS - V14.dwg
 DATE TIME: 4/20/2015 4:11 PM
 LAYOUT: D3
 SCALE:
 DESIGNED BY:
 CHECKED BY:
 DRAWN BY:

REVISIONS			STATE	PROJECT DESIGNATION	YEAR	SHEET NO.	TOTAL SHEETS
NO.	DATE	DESCRIPTION	ALASKA	0515(005)/57310	2015	D4	D5

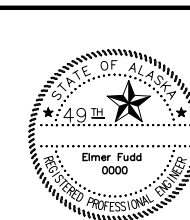
608(6)				
DETECTABLE WARNING TILES				
SHEET	STATION	OFFSET	QUANTITY (EA)	REMARKS
F1	15+77.87	68.89 RT	1	2' X 5'
F1	16+05.51	58.01 RT	1	2' X 5'
F1	18+17.89	43.61 LT	1	2' X 5'
F1	18+53.98	43.43 LT	1	2' X 5'
F2	19+72.51	58.77 RT	1	2' X 5'
F2	19+99.86	58.32 RT	1	2' X 5'
F3	26+22.05	47.40 LT	1	2' X 5'
F3	26+24.58	61.52 RT	1	2' X 5'
F3	26+52.15	61.85 RT	1	2' X 5'
F3	26+54.73	47.59 LT	1	2' X 5'
F4	32+87.29	58.52 RT	1	2' X 5'
F4	32+83.93	36.55 LT	1	2' X 5'
F5	33+14.80	44.05 LT	1	2' X 5'
F5	33+14.66	58.53 RT	1	2' X 5'
F6	39+48.01	61.44 RT	1	2' X 5'
F6	39+45.38	47.08 LT	1	2' X 5'
F6	39+75.57	61.85 RT	1	2' X 5'
F6	39+78.17	47.55 LT	1	2' X 5'
F6	42+78.32	58.34 RT	1	2' X 5'
F6	43+05.93	57.91 RT	1	2' X 5'
F7	44+35.98	44.01 LT	1	2' X 5'
F7	44+67.62	44.17 LT	1	2' X 5'
F7	46+13.57	58.15 RT	1	2' X 5'
F7	46+41.09	58.38 RT	1	2' X 5'
BASE BID TOTAL:			24	EA

609(2A)				
CURB AND GUTTER, ALL TYPES				
SHEET	FROM STATION	TO STATION	QUANTITY (LF)	REMARKS
F1	13+86.80	15+79.67	238	RT
F1	13+88.44	18+19.85	458	LT
F1	16+03.67	19+74.12	416	RT
F1	18+51.95	26+23.92	820	LT
F2	19+98.12	26+26.41	674	RT
F3	24+39.60	25+81.69	284	MEDIAN
F3	26+50.41	32+88.98	687	RT
F3	26+52.92	32+88.98	682	LT
F3	26+96.03	28+37.45	283	MEDIAN
F4	33+12.98	39+47.35	682	LT
F4	33+12.98	39+49.85	673	RT
F5	37+62.47	39+07.85	294	MEDIAN
F5	39+73.85	42+80.06	351	RT
F5	39+76.35	44+37.82	507	LT
F6	40+20.25	40+91.82	143	MEDIAN
F6	43+04.06	46+15.37	359	RT
F6	44+65.84	52+58.21	817	LT
F7	46+39.37	52+38.08	622	RT
BASE BID TOTAL:			8990	LF

608(13E)					
CONCRETE, TYPE V, 4 INCHES THICK, COLORED AND PATTERN IMPRINTED					
SHEET	FROM STATION	TO STATION	OFFSET	AREA (SY)	REMARKS
F3	24+39.55	25+81.69	CL	94.72	
F3	26+96.07	28+37.45	CL	94.26	
F5	37+62.46	39+07.85	CL	98.36	
F6	40+20.25	40+91.82	CL	47.71	
BASE BID TOTAL:				355	SY

609(2B)				
ISLAND NOSE				
SHEET	STATION	OFFSET	QUANTITY (EA)	REMARKS
F4	24+34.55	1.56 RT	1	
F4	25+86.69	1.51 RT	1	
F4	26+91.06	12.50 RT	1	
F4	28+42.45	12.52 RT	1	
F5	37+57.47	12.53 RT	1	
F6	39+12.86	1.52 RT	1	
F6	40+15.25	12.52 RT	1	
F6	40+96.82	12.53 RT	1	
BASE BID TOTAL:			8990	EA

DRAWING LOCATION: F:\CE 438\Survey\L Project Drawing\Civil 3D 2014\Working Folder\D-SHEETS - V14.dwg
 DATE TIME: 4/20/2015 4:11 PM
 LAYOUT: D4
 SCALE:
 XREFS:
 DESIGNED BY:
 CHECKED BY:
 DRAWN BY:



STATE OF ALASKA
 DEPARTMENT OF TRANSPORTATION
 AND PUBLIC FACILITIES
**JEWEL LAKE ROAD WIDENING,
 STRAWBERRY ROAD TO 88TH
 AVENUE**

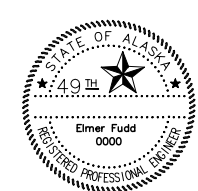
DRAWING LOCATION: F:\CE 438\Survey\L Project Drawing\Civil_3D 2014\Working Folder_D-SHEETS - V14.dwg
 DATE TIME: 4/20/2015 4:11 PM
 LAYOUT: D5
 SCALE:
 DESIGNED BY: XREFS
 CHECKED BY: XREFS
 DRAWN BY: XREFS

REVISIONS			STATE	PROJECT DESIGNATION	YEAR	SHEET NO.	TOTAL SHEETS
NO.	DATE	DESCRIPTION					
			ALASKA	0515(005)/57310	2015	D5	D5

636(1)						
GABION WALL						
SHEET	FROM STATION	OFFSET	TO STATION	OFFSET	VOLUME (CY)	REMARKS
F1	16+42.62	51.53 RT	17+78.40	51.43 RT	181	
					BASE BID TOTAL:	CY
					181	

639(4)				
DRIVEWAY				
SHEET	STATION	OFFSET	QUANTITY (EA)	REMARKS
F2	22+08.11	30.12 RT	1	
F4	29+22.82	19.07 LT	1	
F4	30+01.86	30.36 RT	1	
F4	30+62.19	30.08 RT	1	
F4	30+82.12	18.00 LT	1	
F5	35+80.91	30.28 RT	1	
F5	37+30.02	34.01 RT	1	
F6	41+16.86	33.75 RT	1	
F7	48+49.74	29.89 RT	1	
F7	49+84.95	29.88 RT	1	
F8	50+27.87	29.95 RT	1	
F8	52+16.51	31.76 RT	1	
			BASE BID TOTAL:	EA
			12	

639(6)				
APPROACH				
SHEET	STATION	OFFSET	QUANTITY (EA)	REMARKS
	15+91.67	78.12 RT	1	
	18+35.90	56.36 LT	1	
	19+86.12	72.14 RT	1	
	26+38.42	62.43 LT	1	
	26+38.42	74.96 RT	1	
	33+00.97	56.53 LT	1	
	33+00.98	70.60 RT	1	
	39+61.85	59.81 LT	1	
	39+61.25	73.59 RT	1	
	42+92.05	71.02 RT	1	
	44+51.83	57.36 LT	1	
	46+27.37	71.56 RT	1	
			BASE BID TOTAL:	EA
			12	

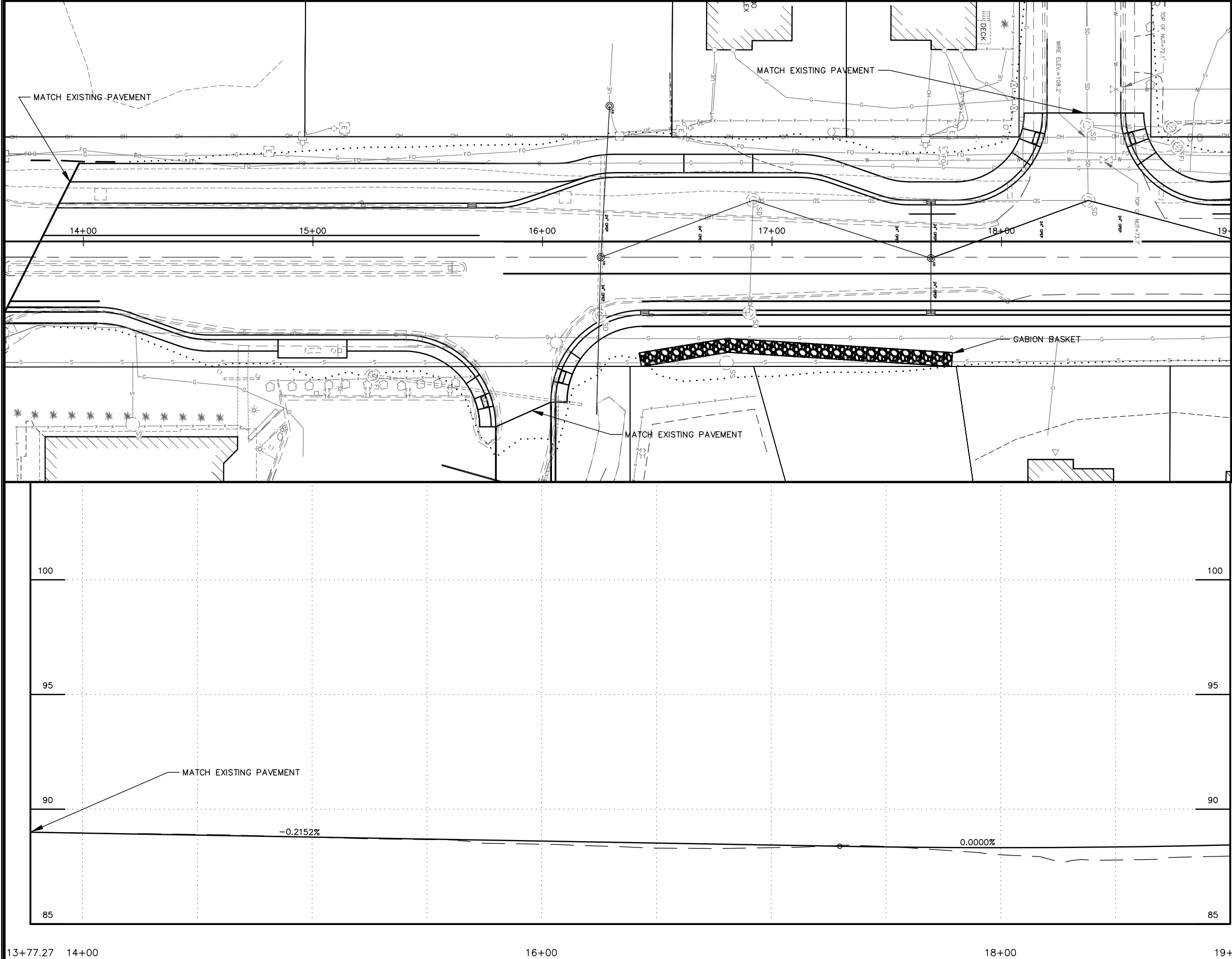


Elmer Fudd
0000
REGISTERED PROFESSIONAL ENGINEER

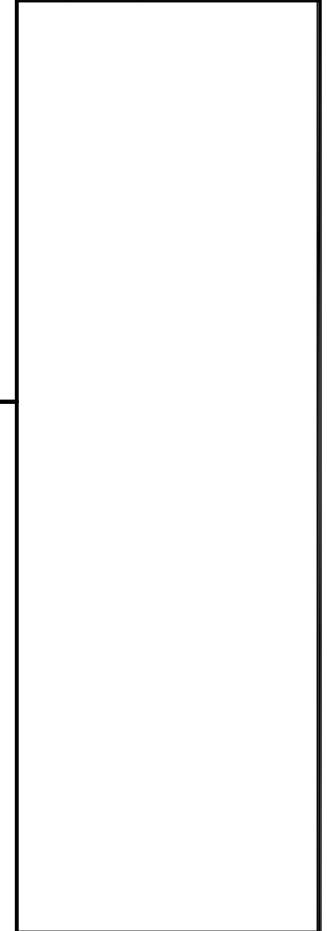
STATE OF ALASKA
DEPARTMENT OF TRANSPORTATION
AND PUBLIC FACILITIES

**JEWEL LAKE ROAD WIDENING,
STRAWBERRY ROAD TO 88TH
AVENUE**

DESIGNED BY
DRAWN BY
XREPS
SCALE
LAYOUT
FO1
DATE
TIME
4/18/2015 8:51 PM
DRAWING LOCATION
F:\CE 438\Survey\L Project Drawing\Civil 3D 2014\Working Folder\F-sheets.dwg



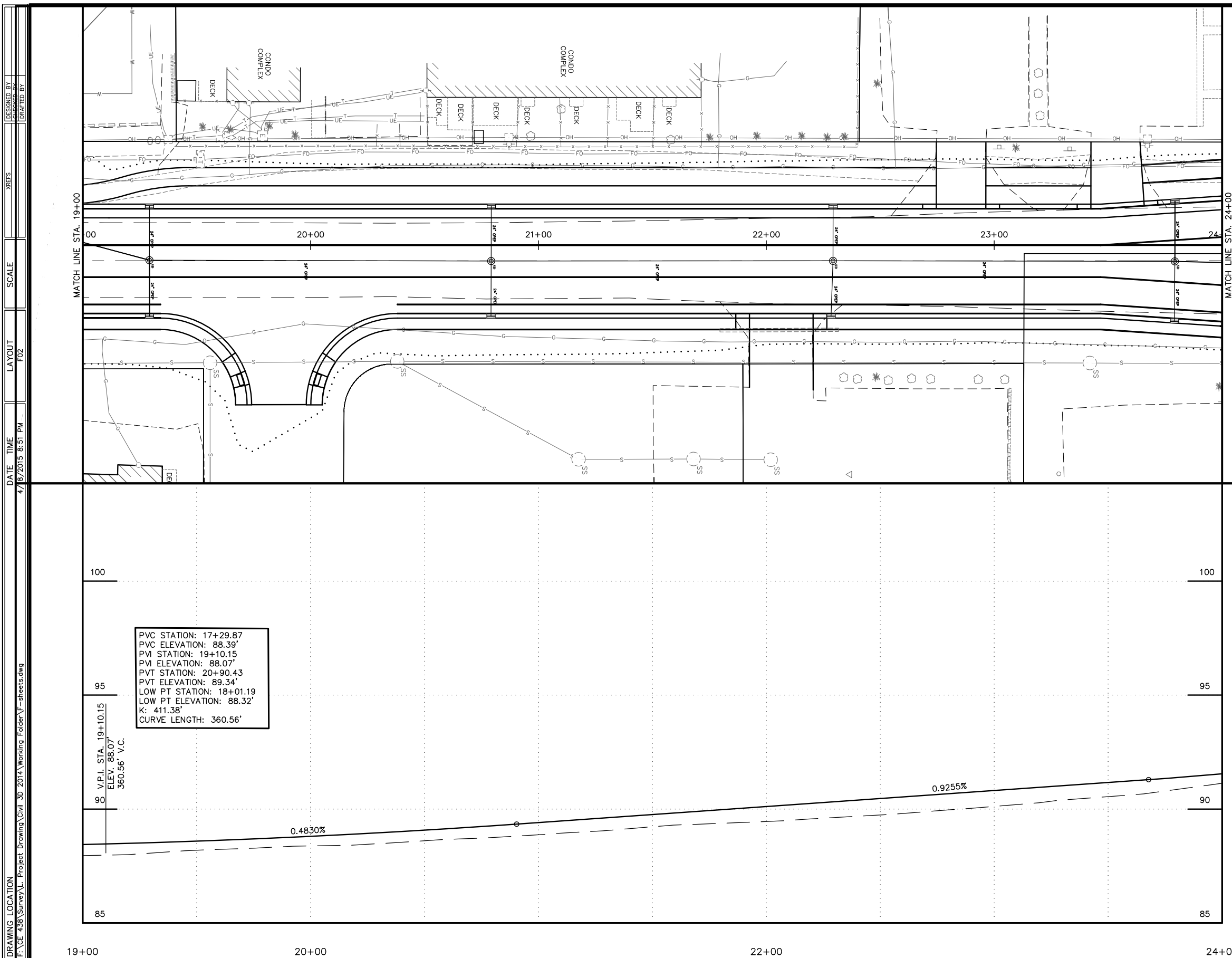
SHEET NO.	TOTAL SHEETS	
F1	F8	
STATE	YEAR	
ALASKA	2015	
PROJECT DESIGNATION		
0515(005)/57310		
ADDENDUM NO.		
ATTACHMENT NO.		
REVISIONS		
NO.	DATE	DESCRIPTION



STATE OF ALASKA
DEPARTMENT OF TRANSPORTATION
AND PUBLIC FACILITIES

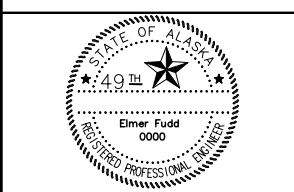
**JEWEL LAKE ROAD WIDENING,
STRAWBERRY ROAD TO 88TH
AVENUE**

STATE OF ALASKA
49th
Elmer Fudd
0000
REGISTERED PROFESSIONAL ENGINEER



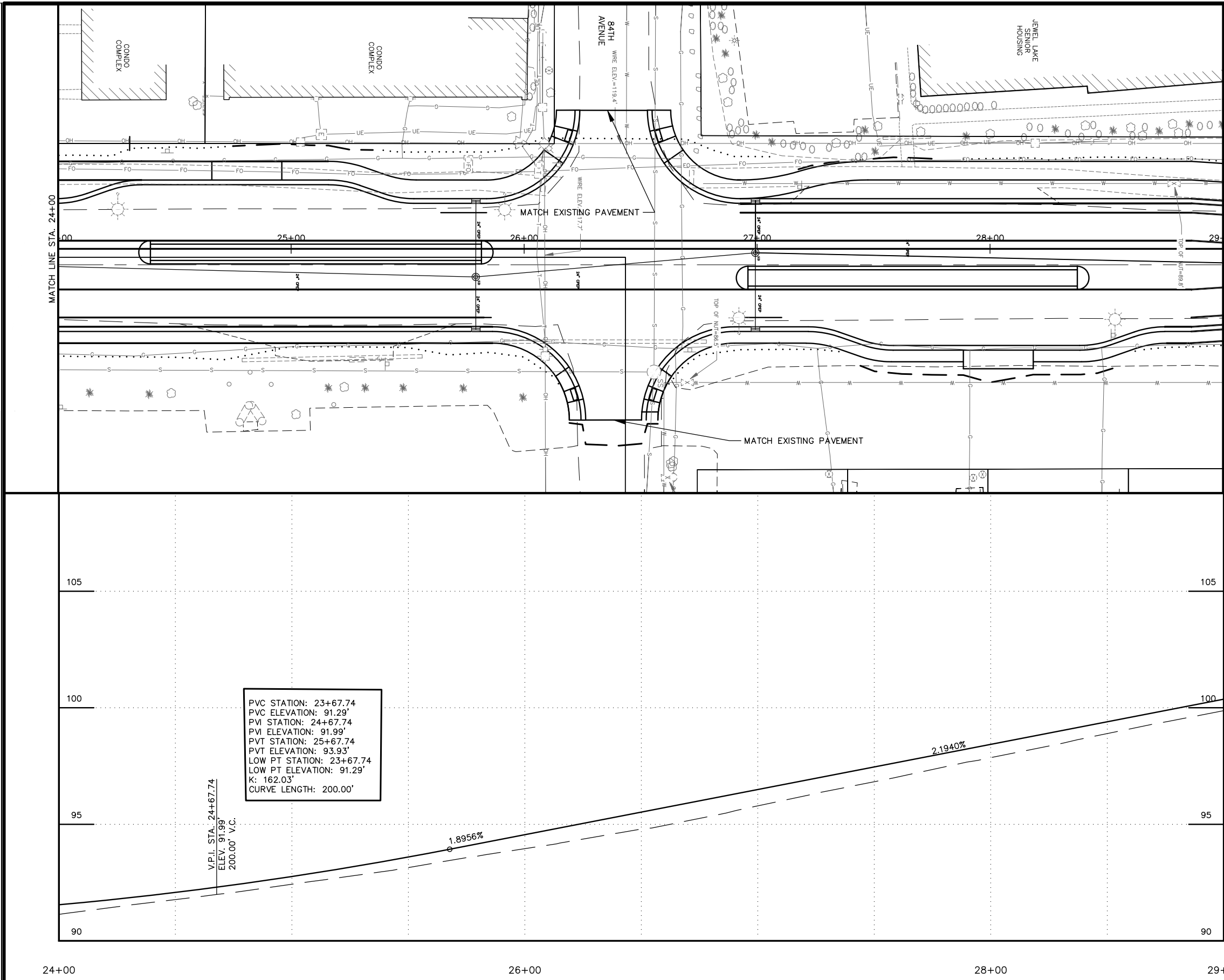
DESIGNED BY: XREPS
 DRAWN BY: XREPS
 SCALE: F02
 LAYOUT: F02
 DATE TIME: 4/8/2015 8:51 PM
 DRAWING LOCATION: F:\CE 436\Survey\L Project Drawing\Civil 3D 2014 Working Folder\--sheets.dwg

SHEET NO.	TOTAL SHEETS	
F2	F8	
STATE	YEAR	
ALASKA	2015	
PROJECT DESIGNATION		
0515(005)/57310		
ADDENDUM NO.		
ATTACHMENT NO.		
REVISIONS		
NO.	DATE	DESCRIPTION

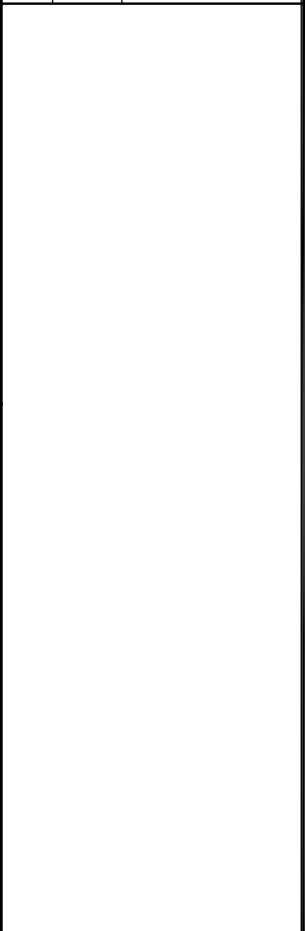


STATE OF ALASKA
 DEPARTMENT OF TRANSPORTATION
 AND PUBLIC FACILITIES
**JEWEL LAKE ROAD WIDENING,
 STRAWBERRY ROAD TO 88TH
 AVENUE**

DESIGNED BY: XREFS
 DRAFTED BY: XREFS
 SCALE: F03
 LAYOUT: F03
 DATE TIME: 4/18/2015 8:51 PM
 DRAWING LOCATION: F:\CE 438\Survey\L Project Drawing\Civil 3D 2014 Working Folder\F-sheets.dwg

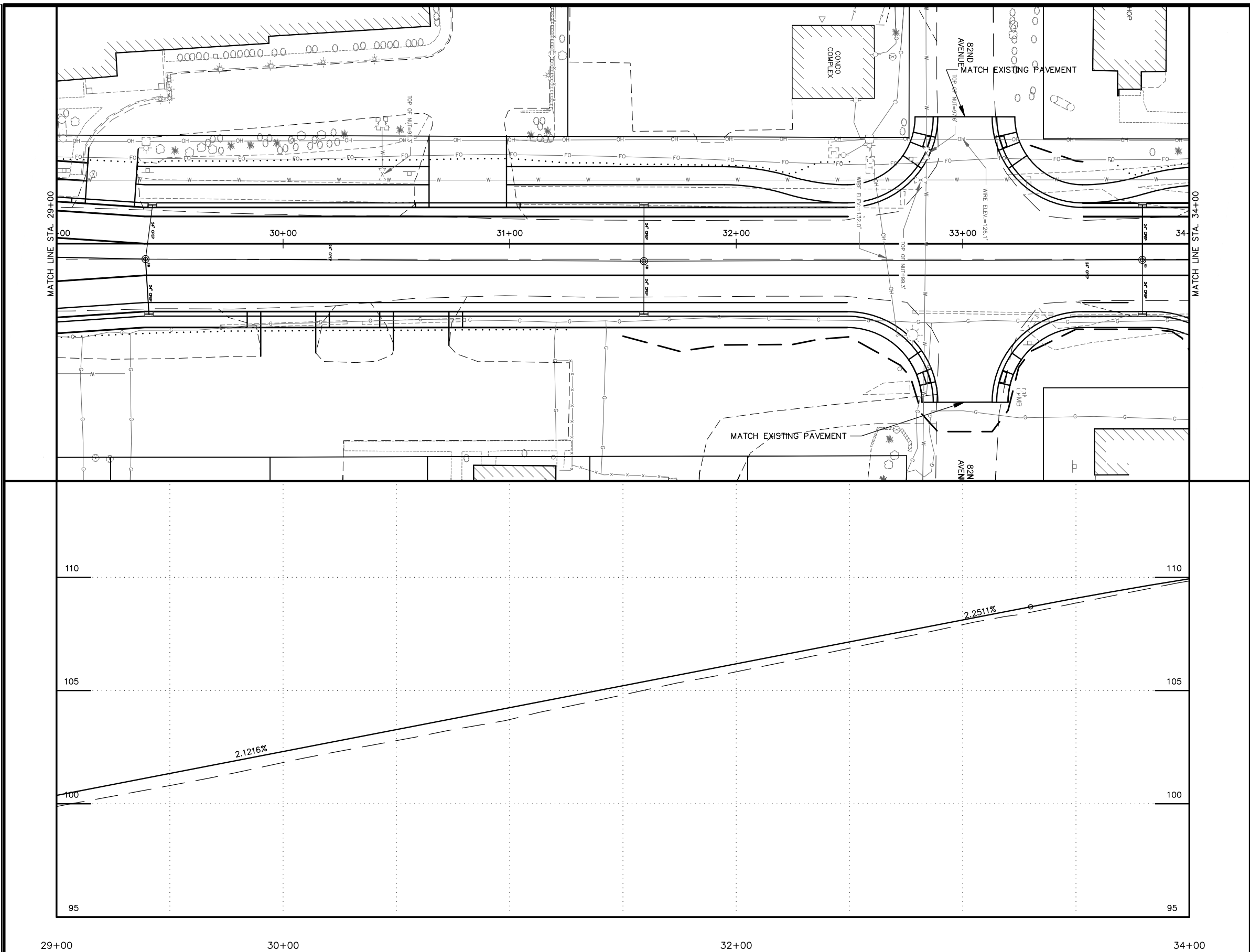


SHEET NO.	TOTAL SHEETS	
F3	F8	
STATE	YEAR	
ALASKA	2015	
PROJECT DESIGNATION		
0515(005)/57310		
ADDENDUM NO.		
ATTACHMENT NO.		
REVISIONS		
NO.	DATE	DESCRIPTION



STATE OF ALASKA
 DEPARTMENT OF TRANSPORTATION
 AND PUBLIC FACILITIES
**JEWELL LAKE ROAD WIDENING,
 STRAWBERRY ROAD TO 88TH
 AVENUE**

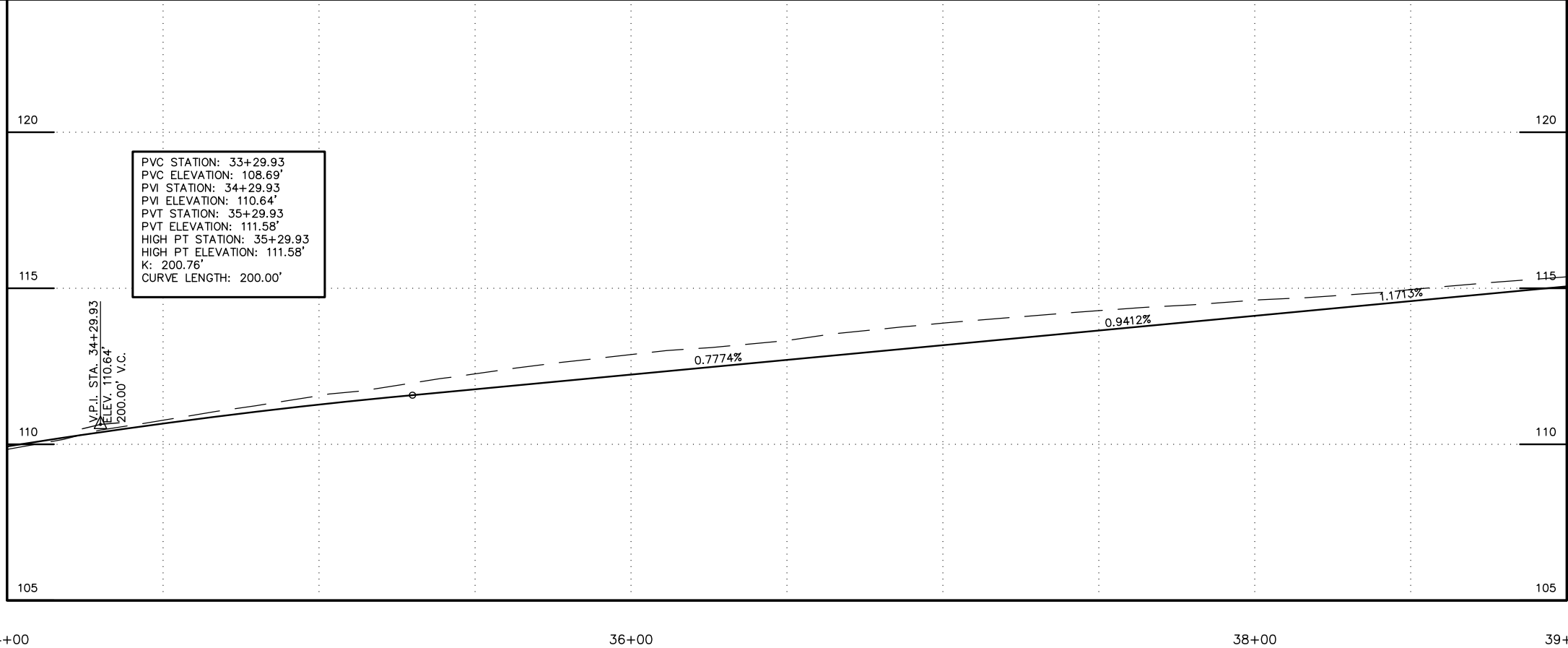
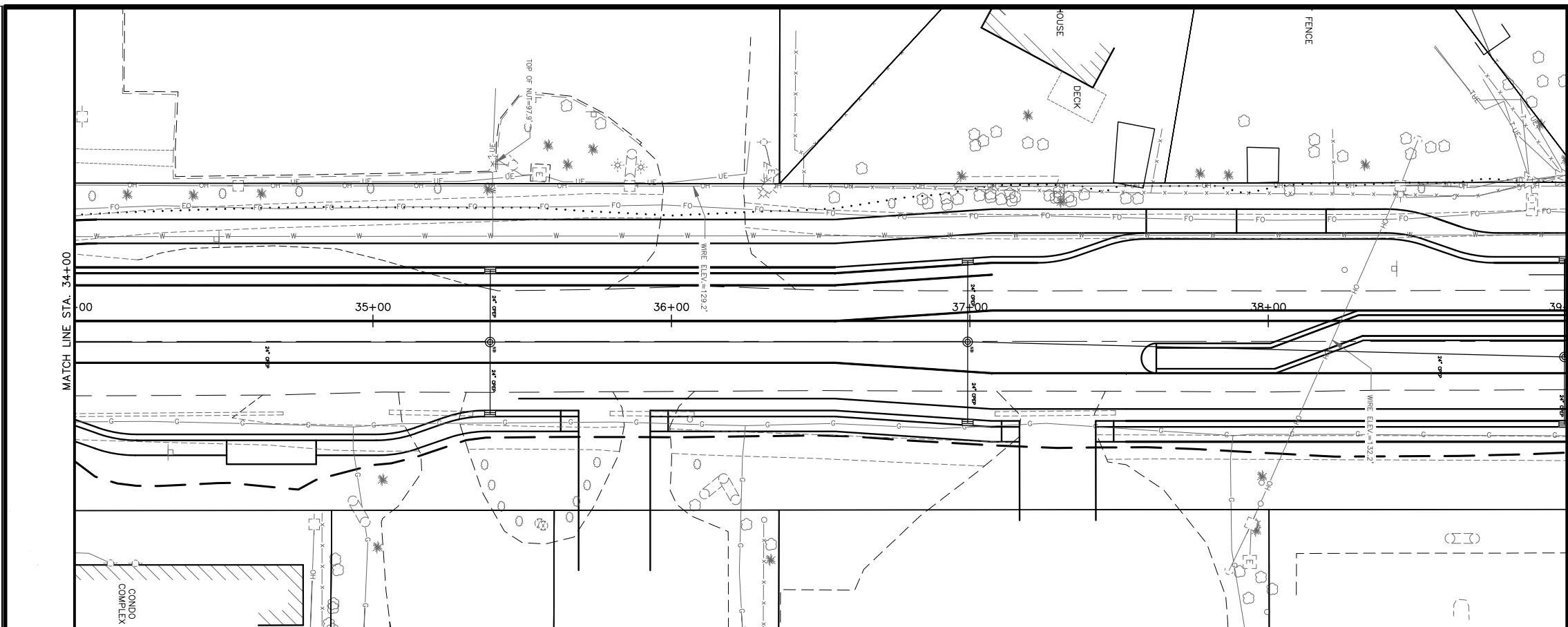
DRAWING LOCATION: F:\CE 438\Survey\L Project Drawing\Civil 3D 2014\Working Folder\F--sheets.dwg
 DATE TIME: 4/18/2015 8:51 PM
 LAYOUT: F04
 SCALE: XREFS
 DESIGNED BY: XREFS
 DRAFTER BY: XREFS



SHEET NO.	TOTAL SHEETS	
F4	F8	
STATE	YEAR	
ALASKA	2015	
PROJECT DESIGNATION		
0515(005)/57310		
ADDENDUM NO.		
ATTACHMENT NO.		
REVISIONS		
NO.	DATE	DESCRIPTION

STATE OF ALASKA
 DEPARTMENT OF TRANSPORTATION
 AND PUBLIC FACILITIES
 JEWEL LAKE ROAD WIDENING,
 STRAWBERRY ROAD TO 88TH
 AVENUE

DESIGNED BY: XREPS
 DRAFTED BY:
 SCALE: F05
 LAYOUT: F05
 DATE TIME: 4/18/2015 8:51 PM
 DRAWING LOCATION: F:\CE 438\Survey\L Project Drawing\Civil 3D 2014\Working Folder\F--sheets.dwg

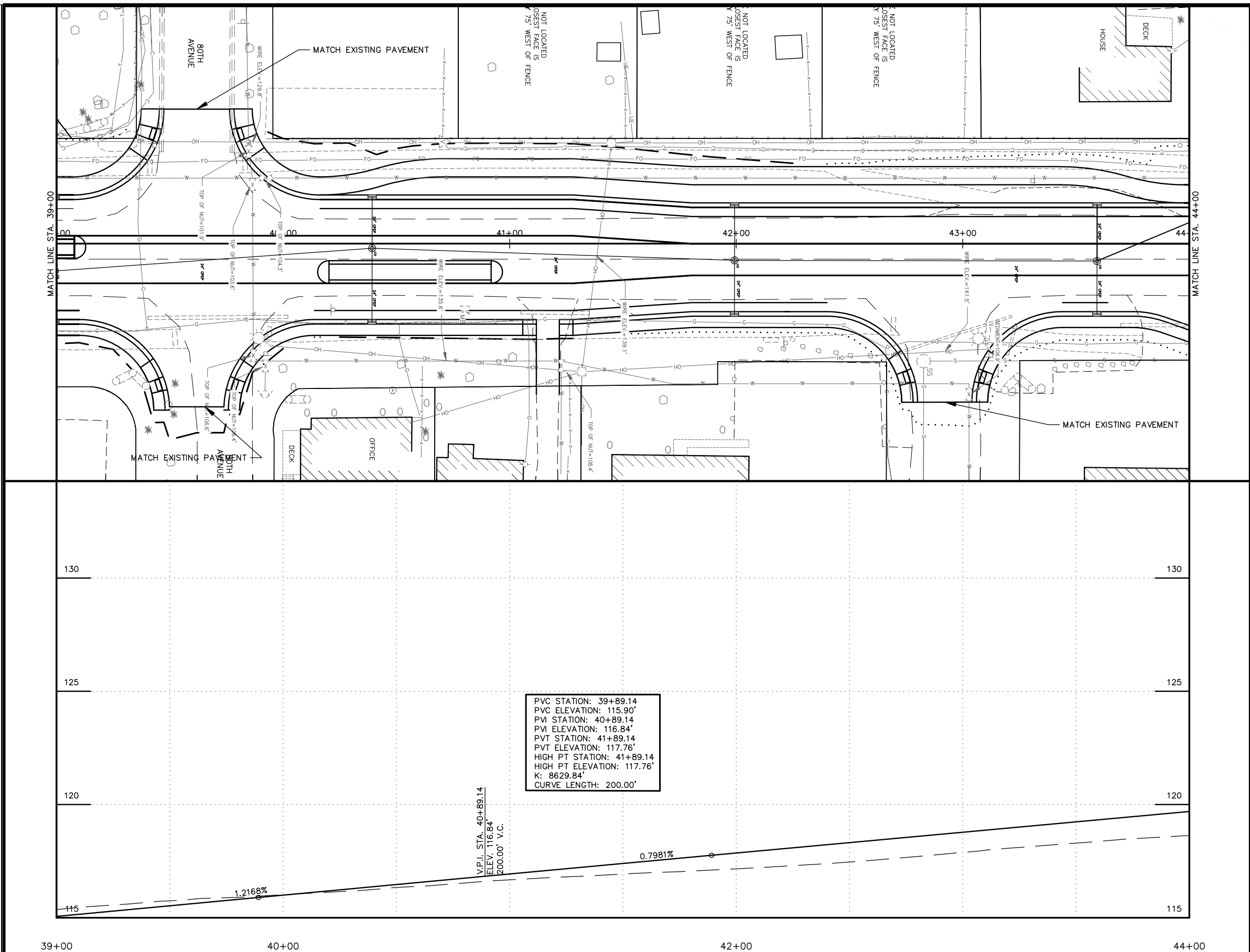


SHEET NO.	TOTAL SHEETS	
F5	F8	
STATE	YEAR	
ALASKA	2015	
PROJECT DESIGNATION		
0515(005)/57310		
ADDENDUM NO.		
ATTACHMENT NO.		
REVISIONS		
NO.	DATE	DESCRIPTION



STATE OF ALASKA
 DEPARTMENT OF TRANSPORTATION
 AND PUBLIC FACILITIES
**JEWEL LAKE ROAD WIDENING,
 STRAWBERRY ROAD TO 88TH
 AVENUE**

DRAWING LOCATION: F:\CE 438\Survey\L- Project Drawing\Civil 3D 2014\Working Folder\F--sheets.dwg
 DATE TIME: 4/18/2015 9:00 PM
 LAYOUT: F06
 SCALE: XREFS
 DESIGNED BY: XREFS
 DRAFTER BY: XREFS



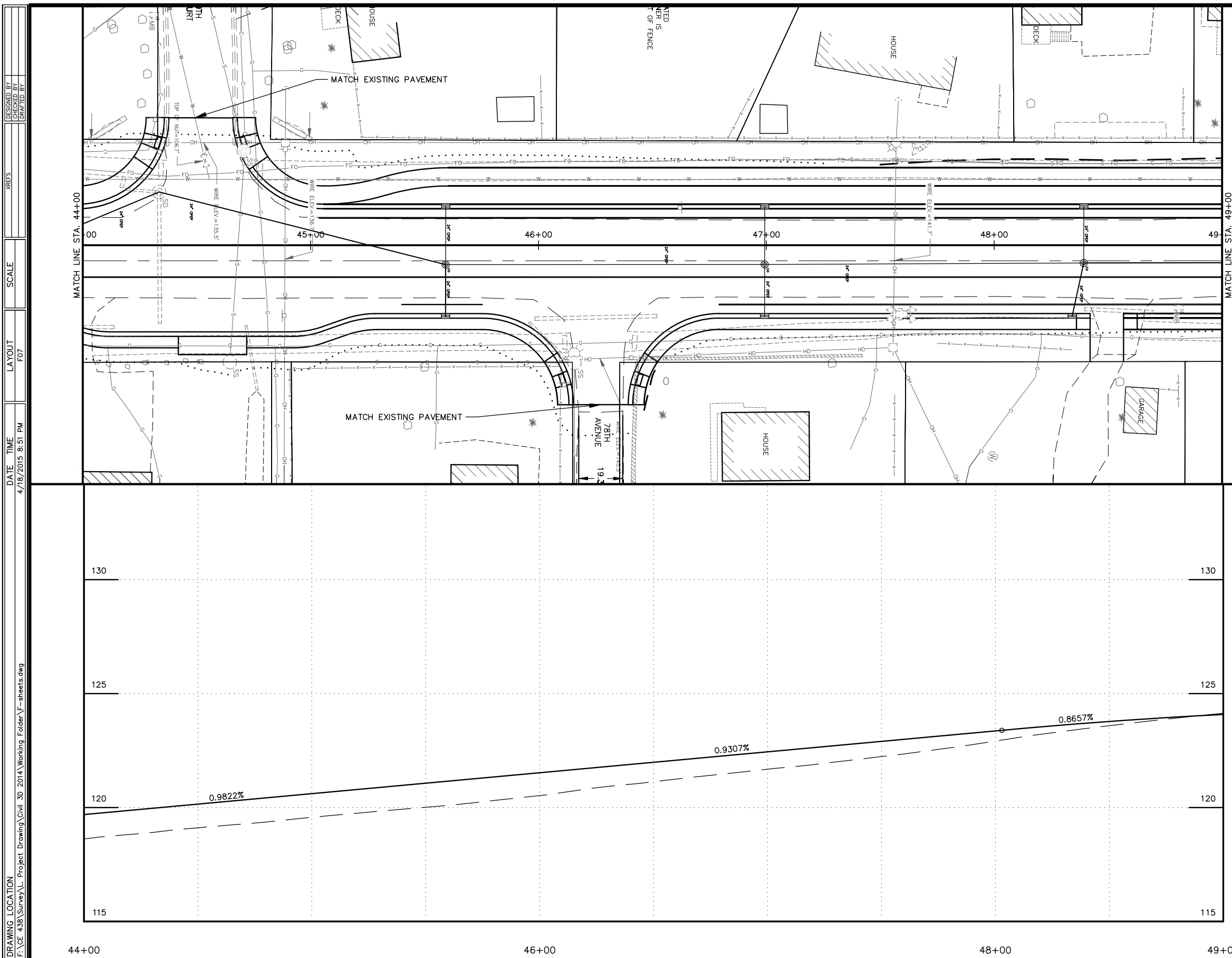
PVC STATION: 39+89.14
 PVC ELEVATION: 115.90'
 PVI STATION: 40+89.14
 PVI ELEVATION: 116.84'
 PVT STATION: 41+89.14
 PVT ELEVATION: 117.76'
 HIGH PT STATION: 41+89.14
 HIGH PT ELEVATION: 117.76'
 K: 8629.84'
 CURVE LENGTH: 200.00'

V.P.I. STA. 40+89.14
 ELEV. 116.84'
 200.00' V.C.

SHEET NO.	TOTAL SHEETS	
F6	F8	
STATE	YEAR	
ALASKA	2015	
PROJECT DESIGNATION		
0515(005)/57310		
ADDENDUM NO.		
ATTACHMENT NO.		
REVISIONS		
NO.	DATE	DESCRIPTION

STATE OF ALASKA
 DEPARTMENT OF TRANSPORTATION
 AND PUBLIC FACILITIES

JEWEL LAKE ROAD WIDENING,
 STRAWBERRY ROAD TO 88TH
 AVENUE



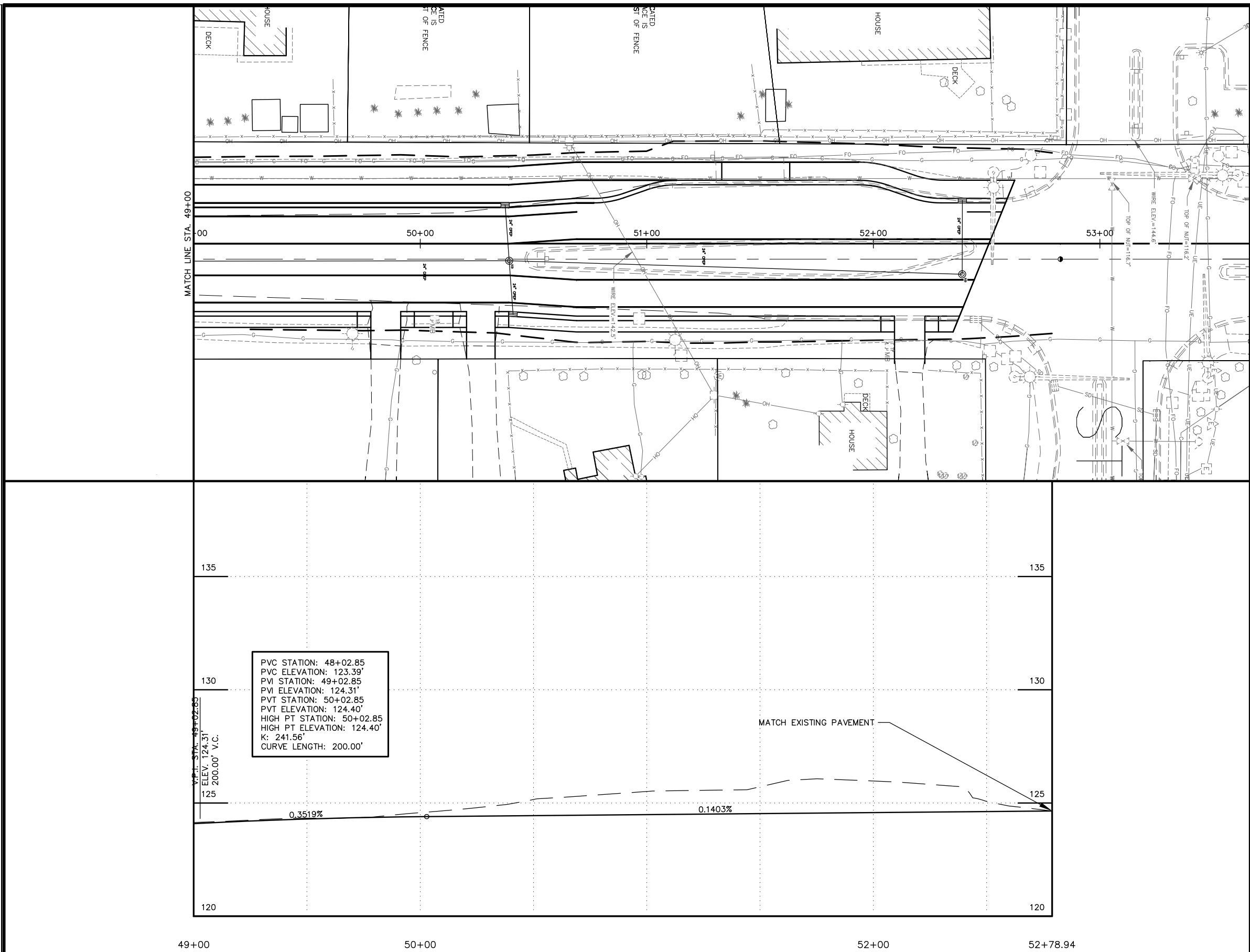
DESIGNED BY: XREPS
 DRAFTER BY: XREPS
 SCALE: F07
 LAYOUT: F07
 DATE TIME: 4/18/2015 8:51 PM
 DRAWING LOCATION: F:\CE 438\Survey\L Project Drawing\Civil 3D 2014\Working Folder\F--sheets.dwg

SHEET NO.	TOTAL SHEETS	
F7	F8	
STATE	YEAR	
ALASKA	2015	
PROJECT DESIGNATION		
0515(005)/57310		
ADDENDUM NO.		
ATTACHMENT NO.		
REVISIONS		
NO.	DATE	DESCRIPTION

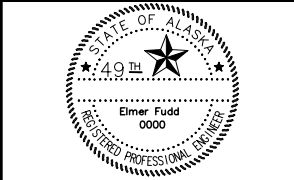


STATE OF ALASKA
 DEPARTMENT OF TRANSPORTATION
 AND PUBLIC FACILITIES
**JEWEL LAKE ROAD WIDENING,
 STRAWBERRY ROAD TO 88TH
 AVENUE**

DESIGNED BY: XREPS
 DRAFTED BY: XREPS
 SCALE: F08
 LAYOUT: F08
 DATE TIME: 4/18/2015 8:51 PM
 DRAWING LOCATION: F:\CE 438\Survey\L Project Drawing\Civil 3D 2014\Working Folder\F--sheets.dwg



SHEET NO.	TOTAL SHEETS	
F8	F8	
STATE	YEAR	
ALASKA	2015	
PROJECT DESIGNATION		
0515(005)/57310		
ADDENDUM NO.		
ATTACHMENT NO.		
REVISIONS		
NO.	DATE	DESCRIPTION



STATE OF ALASKA
 DEPARTMENT OF TRANSPORTATION
 AND PUBLIC FACILITIES
**JEWEL LAKE ROAD WIDENING,
 STRAWBERRY ROAD TO 88TH
 AVENUE**

DRAWING LOCATION: F:\CE 438\Survey\Project Drawing\Civil 3D 2014 Working Folder\HI_TRAFFIC-LEGEND-AND-NOTES.dwg
 DATE: 4/3/2015 4:47 PM
 LAYOUT: HI
 SCALE: XREFS
 DESIGNED BY: []
 DRAFTED BY: []

SYMBOL LEGEND

EXISTING	PROPOSED	DESCRIPTION
		LOAD CENTER
		TRAFFIC CONTROLLER
		BEACON CONTROLLER
		TYPE I A JUNCTION BOX
		TYPE II JUNCTION BOX
		TYPE III JUNCTION BOX
		TYPE IV JUNCTION BOX
		ELECTROLIER
		HIGHTOWER
		SIGNAL POLE WITH MASTARM
		PEDESTRIAN PUSH BUTTON
		PEDESTRIAN SIGNAL
		VEHICULAR SIGNAL
		VEHICULAR SIGNAL LEFT
		VEHICULAR SIGNAL RIGHT
		OPTICAL DETECTOR
		GPS DETECTOR
		CAMARA DETECTOR
		RADAR DETECTOR
		LOOP DETECTOR
		ANTENNA, YAGI OR OMNI
		MASTARM BEACON
		RURAL BEACON
		SCHOOL ZONE BEACON
		LOOP DETECTOR CONDUIT
		SIGNAL CONDUIT
		LIGHTING CONDUIT
		SIGNAL & LIGHTING CONDUIT
		CONDUIT BORING
		CONDUIT SIZE IN INCHES
		FIBER OPTIC VAULT
		INTERCONNECT
		SIGN POST & NUMBER
		PRIVATE SIGN

PAVEMENT MARKING LEGEND

PROPOSED	DESCRIPTION
	PROJECT CENTERLINE
	8" WHITE SOLID STRIPE
	4" WHITE SOLID STRIPE
	4" WHITE SKIP STRIPE 10' STRIPES AND 30' SPACES
	8" WHITE LANE GUIDE SKIP LANE CONTINUATION OR TURN SKIP 1' STRIPES AND 3' SPACES
	8" YELLOW SOLID STRIPE
	4" YELLOW SOLID STRIPE
	4" YELLOW SKIP STRIPE 10' STRIPES AND 30' SPACES
	STRIPING CHANGE STATION INTERVAL
	2' CROSSWALK OR STOPBAR
	LADDER CROSSWALK LAYOUT 2' WIDE RUNGS WITH 2' SPACES ALIGNED TO AVOID TIRE PATHS
	TYPICAL PAINTED MEDIAN

ABBREVIATIONS

- CL - CENTERLINE
- SIG - SERVICE TO CONTROLLER
- INTX - INTERSECTION
- INTX L - INTERSECTION LIGHTING
- LTG - LIGHTING
- PRE 2 - PREEMPTION #
- PRE CON 2 - PREEMPTION CONTROLLER #
- LC - LOAD CENTER
- TC - TRAFFIC CONTROLLER
- P1 - TRAFFIC SIGNAL POLE #
- PEC - PHOTOELECTRIC CELL
- YAGI - DIRECTIONAL ANTENNA
- OMNI - OMNI DIRECTIONAL ANTENNA
- HEAD - VEHICULAR SIGNAL HEAD
- PED B 28 - PEDESTRIAN PUSH BUTTON #
- PEDI - PEDESTRIAN SIGNAL HEAD
- RMC - RIGID METAL CONDUIT
- PE - POLYETHYLENE CONDUIT
- LFNC - LIQUIDTIGHT FLEXIBLE NONMETALLIC CONDUIT
- AWG - AMERICAN WIRE GAUGE
- NB - NORTH BOUND
- EB - EAST BOUND
- SB - SOUTH BOUND
- WB - WEST BOUND

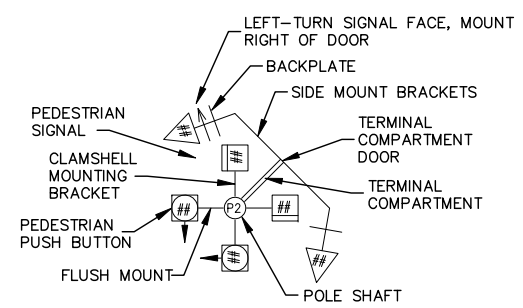
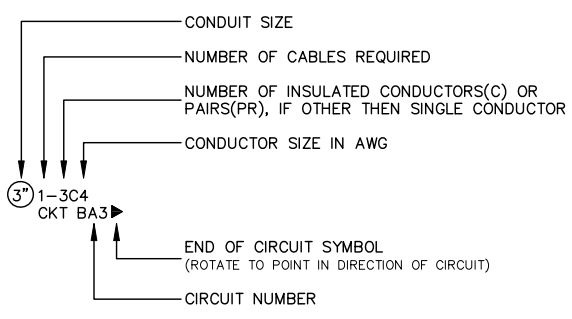
09/09/2014 CENTRAL REGION DETAIL

NOTES:

- #### FOUNDATIONS NOTES:
- STATION & C.L. REFERENCE ARE TO THE CENTER OF THE STRUCTURE, EXCEPT ON LOOPS WHICH ARE TO THE CENTER OF THE TRAILING EDGE OF THE LOOP (EDGE NEAREST INTERSECTION).
 - JUNCTION BOX LOCATIONS APPROXIMATE. LOCATE J-BOXES SO THAT THEY ARE LOCATED OUT OF THE PATHWAY, SIDEWALK, CURB RAMPS, AND DRAINAGE COLLECTION AREAS.
 - INSTALL LOAD CENTER AND TRAFFIC CONTROLLER FOUNDATIONS WITHIN 1-DEGREE OF PLUMB.
 - INSTALL ANCHOR BOLTS IN CAST FOUNDATIONS TO BE WITHIN 1:40 OF PLUMB.
 - TOPSOIL AND SEED ANY DISTURBED AREAS.

SIGNING & STRIPING NOTES:

- ALL STATION LOCATIONS FOR SIGN INSTALLATION ARE APPROXIMATE. INSTALL SIGNS AT LOCATIONS AS DIRECTED BY THE ENGINEER.
- USE THE FOLLOWING DEFINITIONS TO DECIPHER THE ABBREVIATED SIGN POST TYPES IN THE SIGN SUMMARY SHEETS.
 - A. PT MEANS A PERFORATED STEEL TUBE.
 - B. T MEANS A SQUARE STEEL TUBE.
 - C. P MEANS A ROUND STEEL PIPE.
 - D. W MEANS A WIDE FLANGE BEAM.
 - E. POPL MEANS A POLE PLATE INSTALLED PER ITS STANDARD DRAWING S-23
- FABRICATE ALL SIGNS FROM 0.125" THICK ALUMINUM SHEETING, UNLESS STATED ELSEWHERE.
- FOR SIGNS SUPPORTED BY MULTIPLE POSTS, FABRICATE THE POSTS WITH THEIR TOPS LEVEL WITH ONE ANOTHER.
- FOR PERFORATED STEEL TUBE SIGNPOSTS, INSTALL THE CONCRETE FOUNDATION OPTION SHOWN ON STANDARD DRAWING S-30.03. TRIM EACH PT POST TO LIMIT THE LENGTH INSERTED INTO THE FOUNDATION TO 12 INCHES.
- FABRICATE GUIDE SIGNS ACCORDING TO THE SHOP DRAWINGS INCLUDED IN THE APPENDICES OF PART 4, CONTRACT PROVISIONS AND SPECIAL PROVISIONS. TRIM THE CORNERS OF ALL SIGNS TO THE RADIUS SHOWN ON EACH SHOP DRAWING.
- ERECT NEW SIGNS BEFORE REMOVAL OF EXISTING SIGNS WITH SIMILAR MESSAGE. NOTIFY THE ENGINEER A MINIMUM OF 14 DAYS PRIOR TO BEGINNING SIGN REMOVAL AND SALVAGE OR DISPOSAL ACTIVITIES.
- FOR SIGNS SUPPORTED BY MULTIPLE TUBES OR PIPES, LOCATE THE OUTER POSTS ON MAXIMUM SIX FEET CENTERS. INSTALL ADJACENT WIDE FLANGE POSTS ON MINIMUM EIGHT FEET CENTERS.
- FOR ALL FINAL PAVEMENT MARKINGS USE METHYLMETHACRYLATE MATERIALS. LONGITUDINAL MARKINGS SHALL BE INLAID AT 250 MILS, TRANSVERSE AND SYMBOL MARKINGS TO BE INLAID AT 250 MILS, GORE STRIPES SHALL BE SURFACE APPLIED AT 60 MILS.
- DIMENSIONS REFER TO THE CENTER OF STRIPE AND THE EDGE OF PAVEMENT OR FACE OF CURB WHEN PRESENT.
- IF THE NEW AND EXISTING PAVEMENT MARKINGS ARE NOT ALIGNED AT MATCH LINE, TRANSITION BETWEEN THE TWO USING A 100:1 TAPER ON THE NEW PAVEMENT.
- WHERE NEW STRIPING IS TO EXTEND BEYOND PAVING LIMITS, REMOVE EXISTING STRIPING IN ACCORDANCE WITH SUBSECTION 670-3.04 TO THE EXTENT OF STRIPING LIMITS.



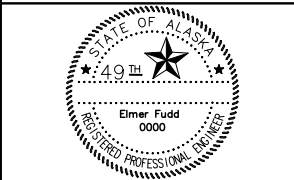
POLE SHAFT LEGEND

CALL BEFORE YOU DIG!
 CONTRACTOR SHALL CALL A MINIMUM OF 3 DAYS IN ADVANCE OF CONSTRUCTION
 ALASKA DIGLINE.....907-278-3121 OR 800-478-3121
 CALL OR GO TO WWW.AKONECALL.COM/STATEWIDE.HTM FOR MEMBER LIST OF WHO WILL BE NOTIFIED

SHEET NO.	TOTAL SHEETS
H1	H5
STATE	YEAR
ALASKA	2015

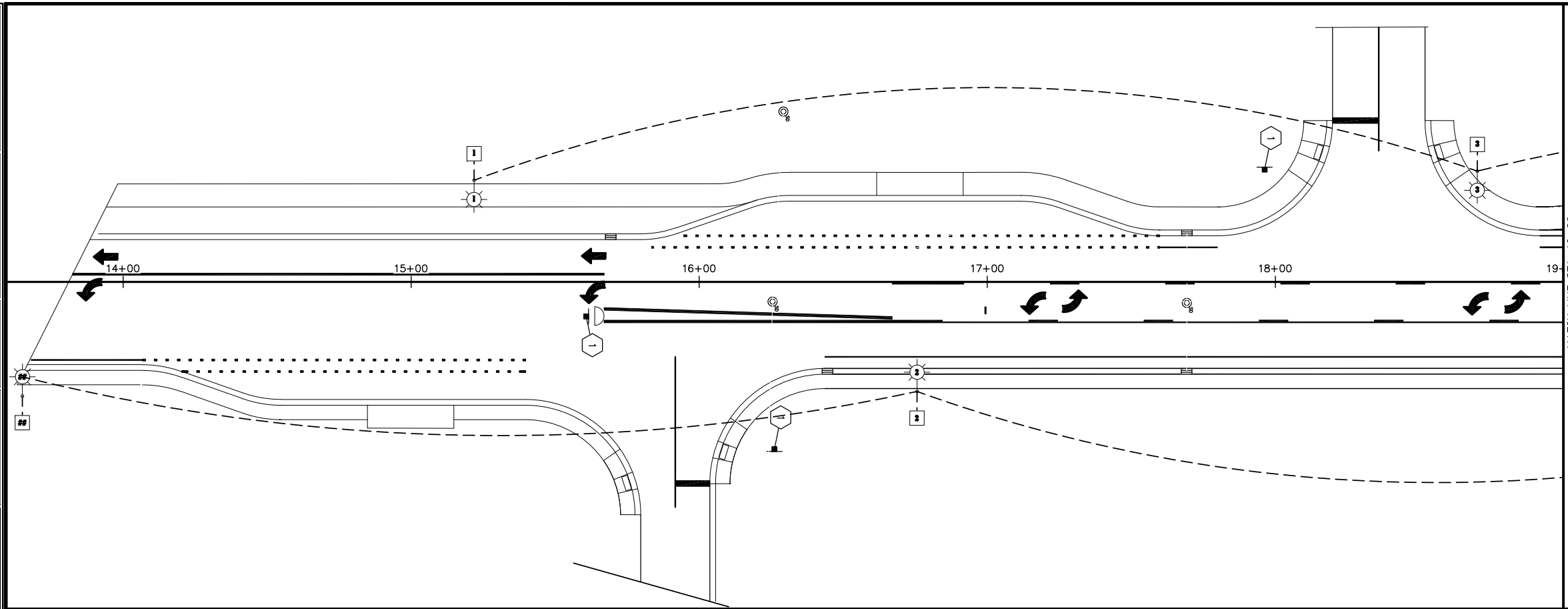
PROJECT DESIGNATION
0515(005)/57310
ADDENDUM NO.
ATTACHMENT NO.

REVISIONS		
NO.	DATE	DESCRIPTION

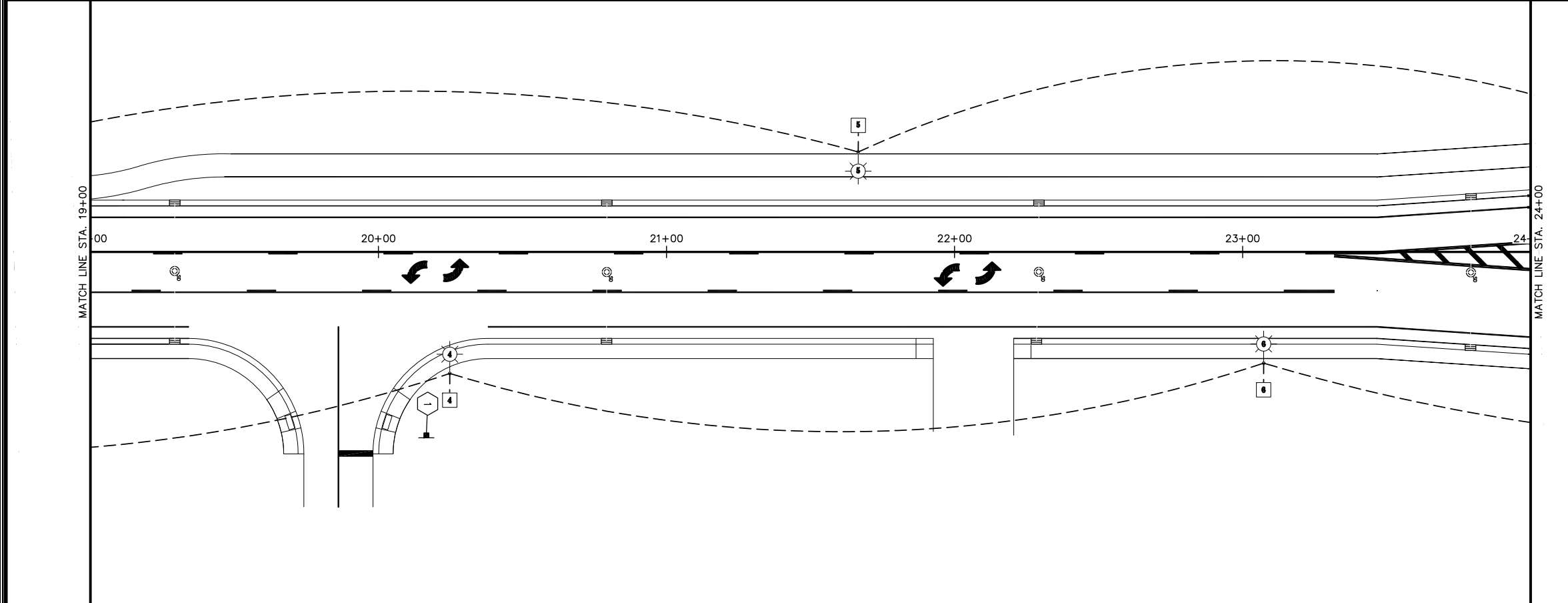


STATE OF ALASKA
 DEPARTMENT OF TRANSPORTATION
 AND PUBLIC FACILITIES
 JEWEL LAKE ROAD WIDENING,
 STRAWBERRY ROAD TO 88TH
 AVENUE

DRAWING LOCATION: F:\CE 438\Survey\Project Drawing\Civil 3D 2014 Working Folder\H-sheets Stripping.dwg
 DATE TIME: 4/3/2015 4:41 PM
 LAYOUT: H-2
 SCALE: AS SHOWN
 DESIGNED BY: AREFS
 CHECKED BY: [blank]
 DRAWN BY: [blank]



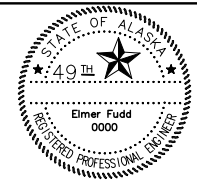
MATCH LINE STA. 19+00



MATCH LINE STA. 19+00

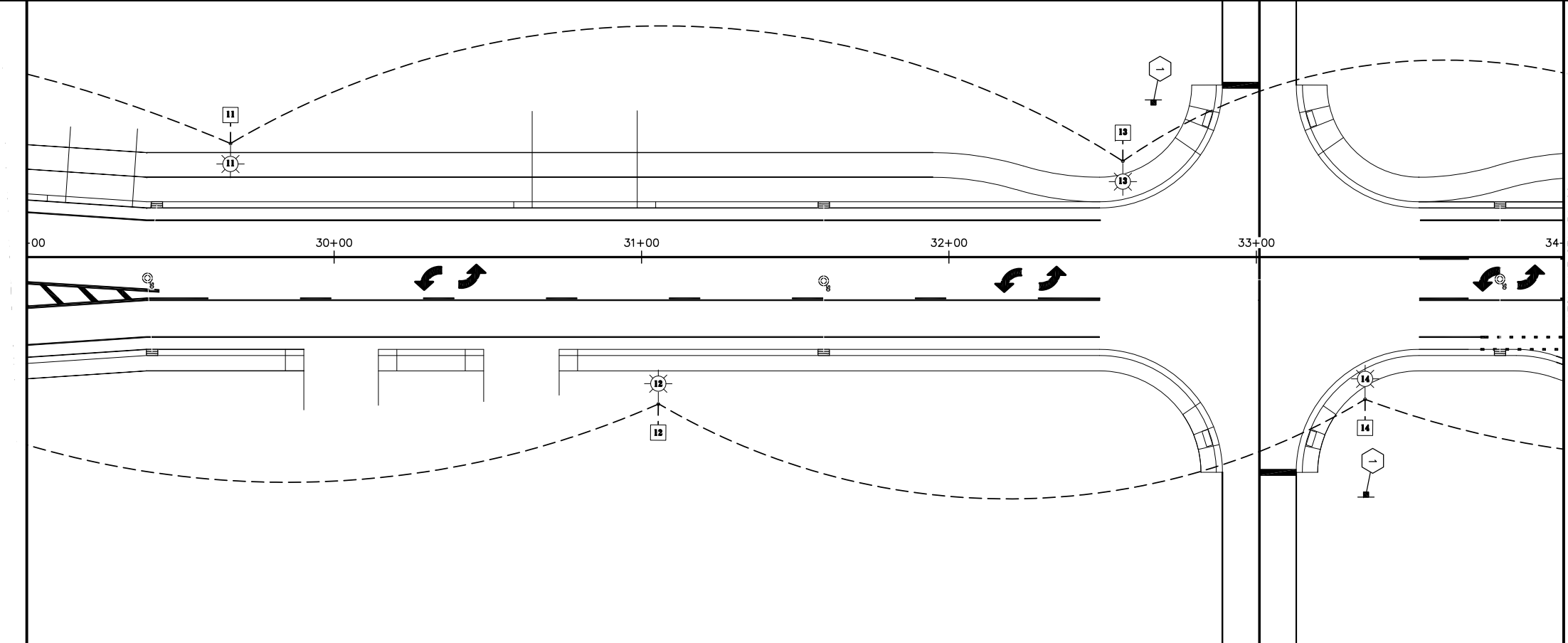
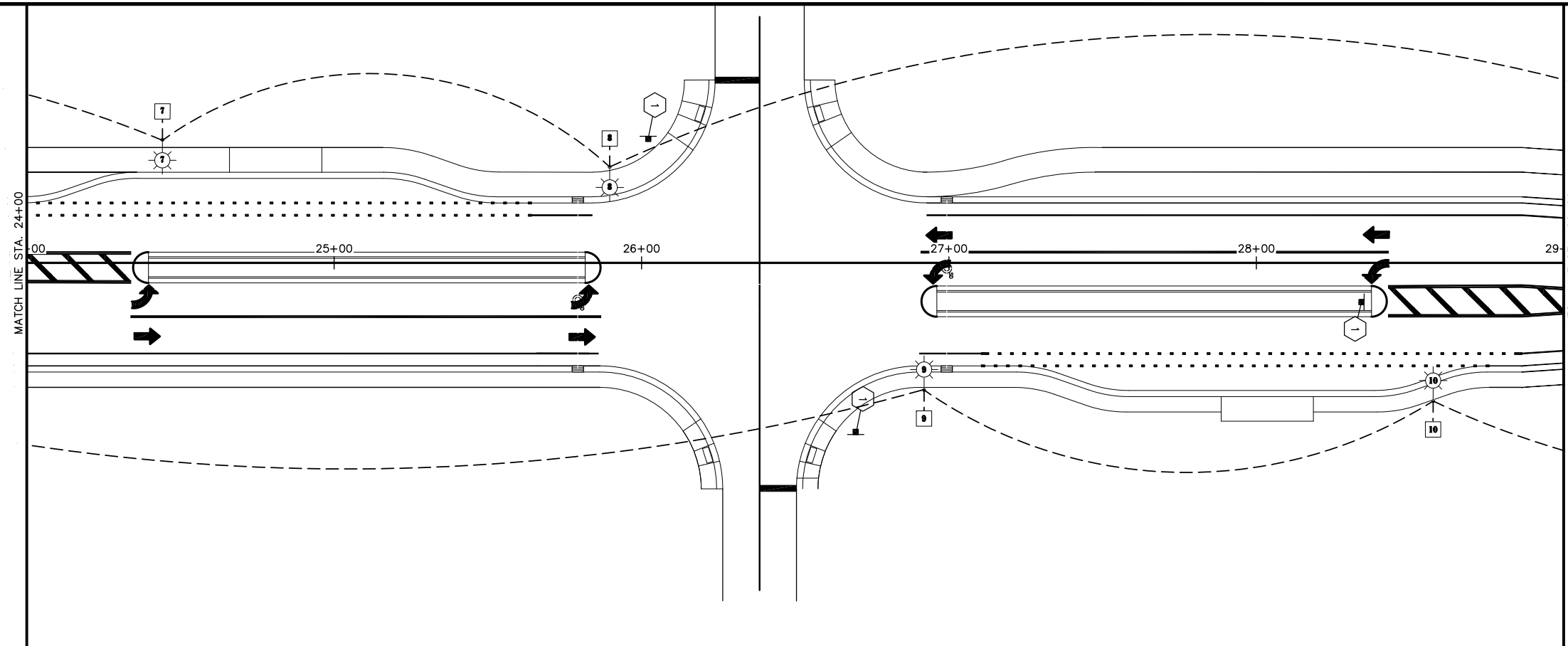
MATCH LINE STA. 24+00

SHEET NO.	TOTAL SHEETS	
H2	H5	
STATE	YEAR	
ALASKA	2015	
PROJECT DESIGNATION		
0515(005)/57310		
ADDENDUM NO.		
ATTACHMENT NO.		
REVISIONS		
NO.	DATE	DESCRIPTION



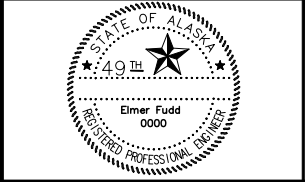
STATE OF ALASKA
 DEPARTMENT OF TRANSPORTATION
 AND PUBLIC FACILITIES
**JEWEL LAKE ROAD WIDENING,
 STRAWBERRY ROAD TO 88TH
 AVENUE**

DRAWING LOCATION: F:\CE_438\Survey\Project Drawing\Civil_3D_2014\Working_Folder\H-sheets_Stripping.dwg
 DATE TIME: 4/3/2015 4:41 PM
 LAYOUT: H-3
 SCALE: [Blank]
 DESIGNED BY: [Blank]
 CHECKED BY: [Blank]
 DRAWN BY: [Blank]



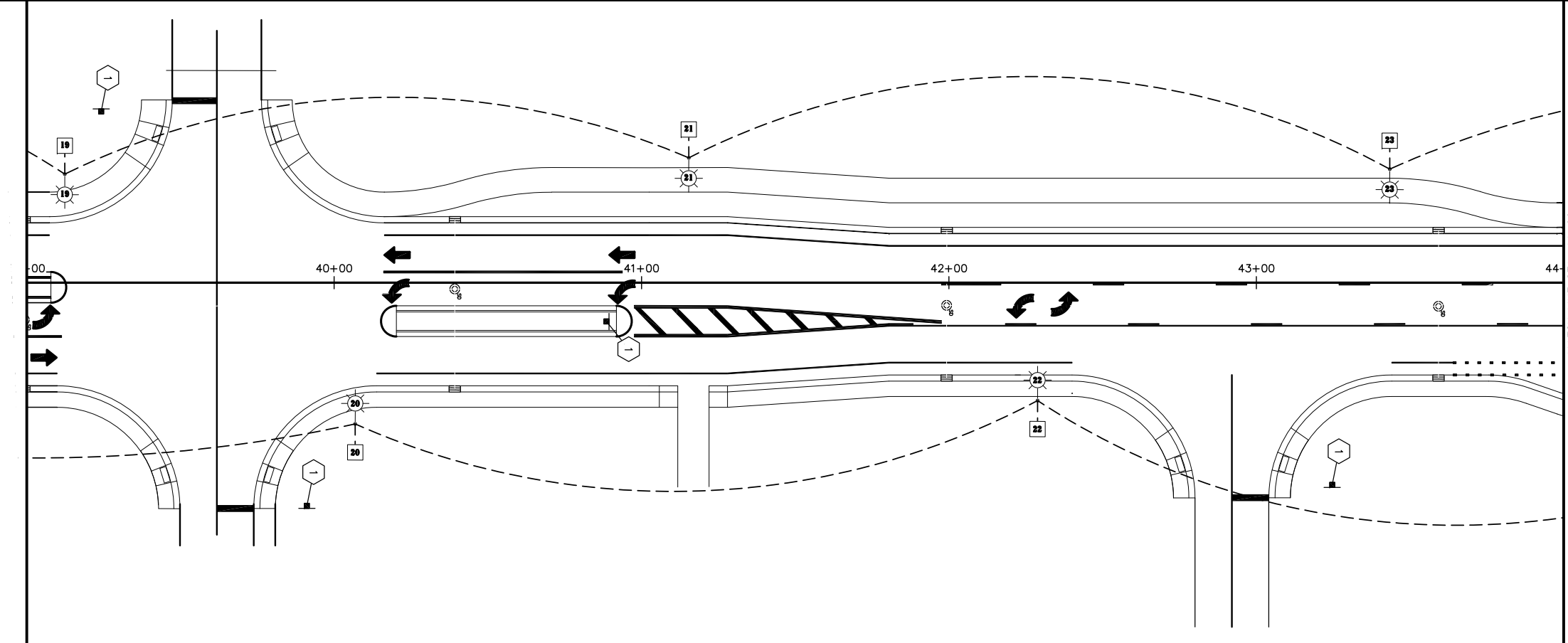
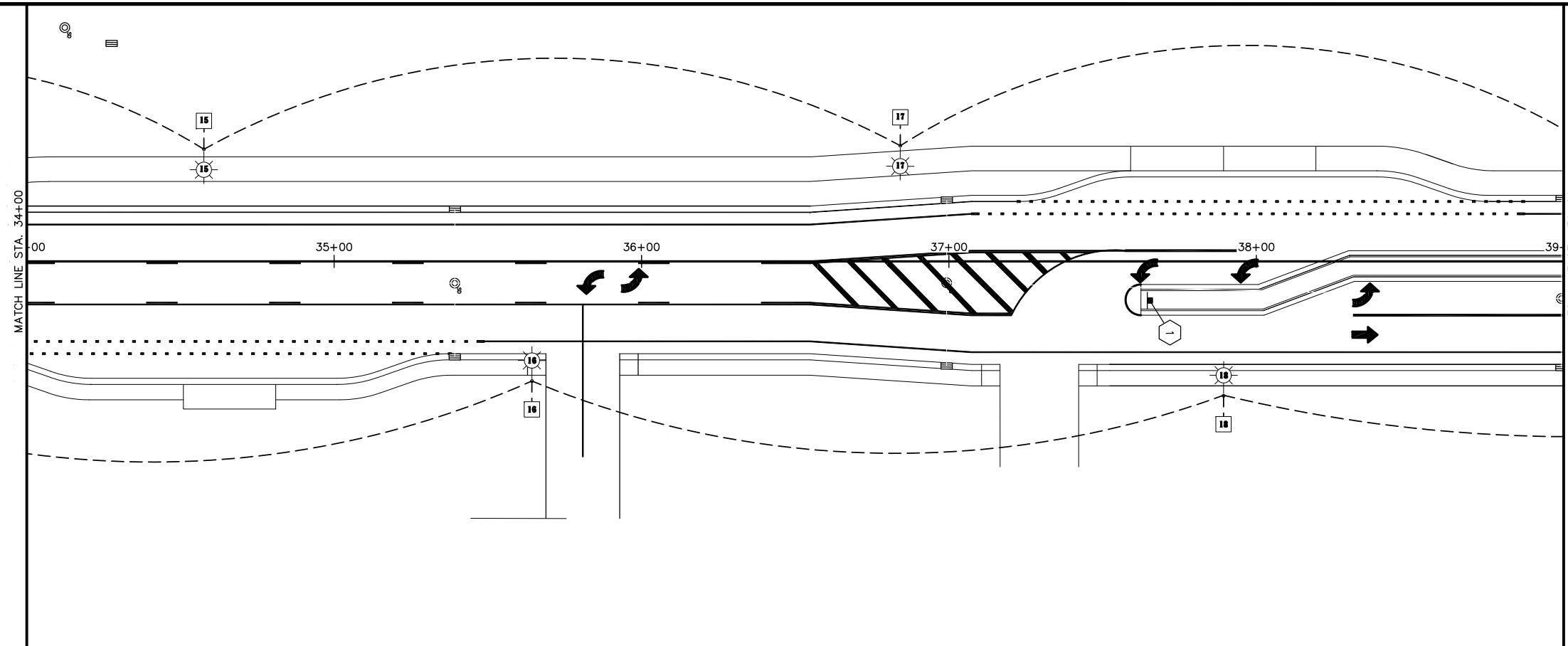
SHEET NO.	TOTAL SHEETS	
H3	H5	
STATE	YEAR	
ALASKA	2015	
PROJECT DESIGNATION		
0515(005)/57310		
ADDENDUM NO.		
ATTACHMENT NO.		
REVISIONS		
NO.	DATE	DESCRIPTION

MATCH LINE STA. 24+00
 MATCH LINE STA. 29+00
 MATCH LINE STA. 30+00
 MATCH LINE STA. 34+00



STATE OF ALASKA
 DEPARTMENT OF TRANSPORTATION
 AND PUBLIC FACILITIES
**JEWEL LAKE ROAD WIDENING,
 STRAWBERRY ROAD TO 88TH
 AVENUE**

DRAWING LOCATION: F:\CE 438\Survey\1. Project Drawing\Civil 3D 2014\Working Folder\H-sheets_Striping.dwg
 DATE TIME: 4/3/2015 4:41 PM
 LAYOUT: H-4
 SCALE:
 SHEETS:
 DESIGNED BY:
 CHECKED BY:
 DRAWN BY:

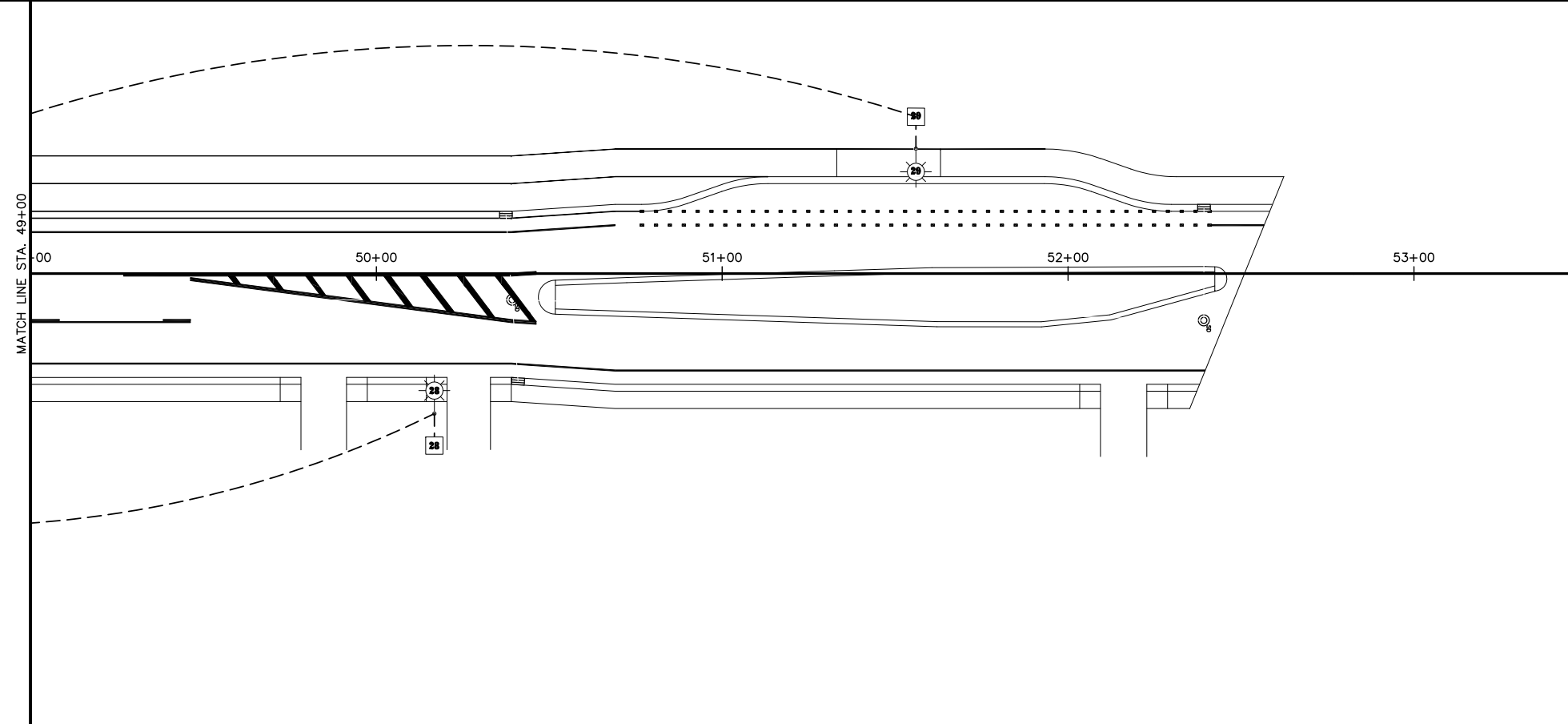
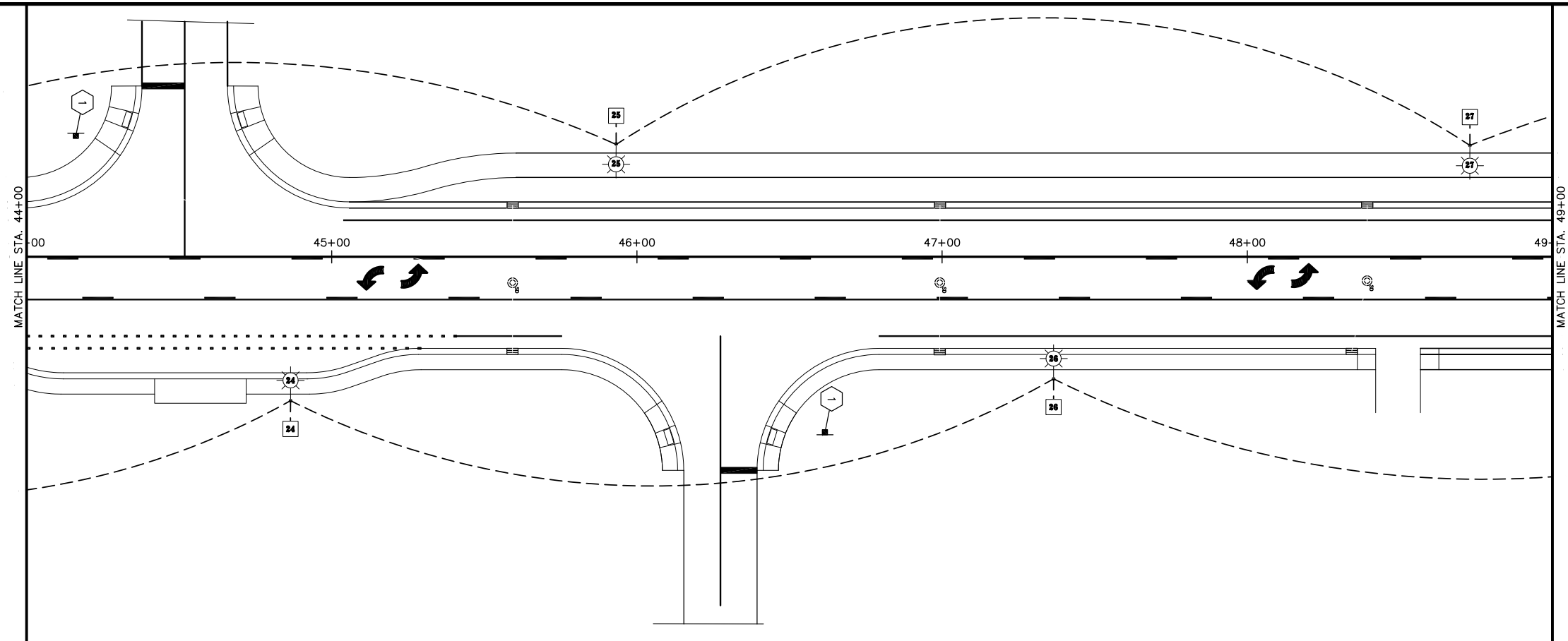


SHEET NO.	TOTAL SHEETS	
H4	H5	
STATE	YEAR	
ALASKA	2015	
PROJECT DESIGNATION		
0515(005)/57310		
ADDENDUM NO.		
ATTACHMENT NO.		
REVISIONS		
NO.	DATE	DESCRIPTION

MATCH LINE STA. 34+00
 MATCH LINE STA. 39+00
 MATCH LINE STA. 44+00

STATE OF ALASKA
 DEPARTMENT OF TRANSPORTATION
 AND PUBLIC FACILITIES
 JEWEL LAKE ROAD WIDENING,
 STRAWBERRY ROAD TO 88TH
 AVENUE

DRAWING LOCATION: F:\CE 438\Survey\Project Drawing\Civil 3D 2014\Working Folder\H-sheets\Striping.dwg
 DATE TIME: 4/3/2015 4:41 PM
 LAYOUT: H-5
 SCALE:
 DESIGNED BY: AREFS
 CHECKED BY:
 DRAWN BY:



SHEET NO.	TOTAL SHEETS	
H5	H5	
STATE	YEAR	
ALASKA	2015	
PROJECT DESIGNATION		
0515(005)/57310		
ADDENDUM NO.		
ATTACHMENT NO.		
REVISIONS		
NO.	DATE	DESCRIPTION

STATE OF ALASKA
 DEPARTMENT OF TRANSPORTATION
 AND PUBLIC FACILITIES
 JEWEL LAKE ROAD WIDENING,
 STRAWBERRY ROAD TO 88TH AVENUE

